

APP CRS
229°

Rwy Idg
5819

TDZE
296

Apt Elev
306

RNAV (GPS) Y RWY 23

FREDERICK MUNI (FDK)

RNP APCH.

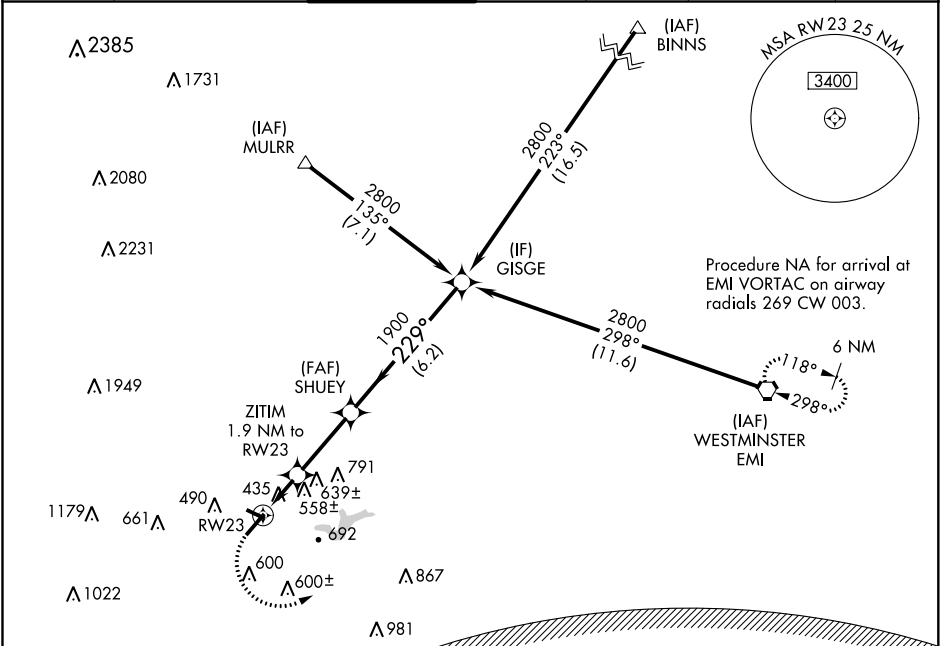
▼

Inop table does not apply to Cat C. Rwy 23 helicopter visibility reduction below ¾ SM NA. Circling Rwy 30 NA at night.

ODALS

MISSED APPROACH: Climbing left turn to 3000 direct EMI VORTAC and hold.

ATIS 124.875	POTOMAC APP CON 125.525 291.625	FREDERICK TOWER ★ 132.4 (CTAF) 0	GND CON 121.975	CLNC DEL 121.975	CLNC DEL 126.9 (When twr closed)	UNICOM 122.95
------------------------	---	--	---------------------------	----------------------------	---	-------------------------



ELEV 306

TDZE 296

REIL Rwy 5

REIL Rwys 12, 23 and 30 0

HIRL Rwy 5-23 0

MIRL Rwy 12-30 0

WASHINGTON DC METROPOLITAN SFRA

WARNING -- WASHINGTON DC SFRA.
CTC POTOMAC APP CON

3000 EMI

VGSI and descent angles not coincident
(VGSI Angle 3.00/TCH 54).

GISGE

SHUEY

ZITIM 1.9 NM to RWY 23

RWY 23

1020

1900

229°

2800

1.9 NM

3 NM

6.2 NM

CATEGORY	A	B	C	D
LNAV MDA	820-¾ 524 (600-¾)	820-1½ 524 (600-1½)	820-1½ 524 (600-1½)	820-1¾ 524 (600-1¾)
CIRCLING	920-1 614 (700-1)	1100-2¼ 794 (800-2¼)	1200-2¾ 894 (900-2¾)	