

WAAS CH 81802 W23A	APP CRS 229°	Rwy Idg 5819 TDZE 296 Apt Elev 306
--	------------------------	---

RNAV (GPS) Z RWY 23

FREDERICK MUNI (FDK)

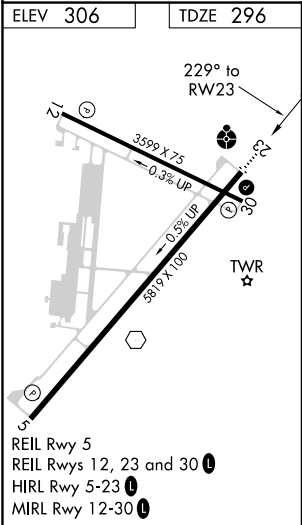
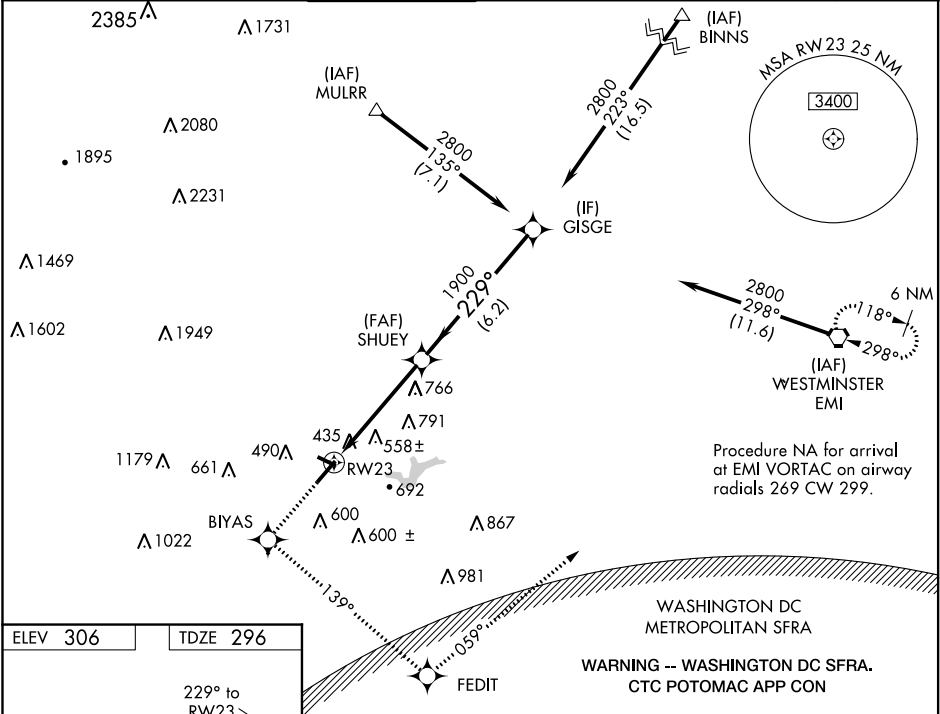
RNP APCH.

Rwy 23 helicopter visibility reduction below ¾ SM NA. Circling Rwy 30 NA at night. For uncompensated Baro-VNAV systems, LNAV/VNAV NA below -1.5°C or above 54°C. Inop table does not apply to LPV, LNAV/VNAV all Cats, and LNAV Cat C.

ODALS

MISSED APPROACH: Climb to 3000 direct BIYAS WP and via 139° track to FEDIT WP and via 059° track to EMI VORTAC and hold.

ATIS 124.875	POTOMAC APP CON 125.525 291.625	FREDERICK TOWER ★ 132.4 (CTAF) 0	GND CON 121.975	CLNC DEL 121.975	CLNC DEL 126.9 (When twr closed)	UNICOM 122.95
------------------------	---	---	---------------------------	----------------------------	---	-------------------------



3000 BIYAS	FEDIT	EMI	VGSi and RNAV glidepath not coincident (VGSi Angle 3.00/TCH 54).
↑	tr 139°	tr 059°	
*LNAV only.			
*2.2 NM to RW23			
SHUEY			GISGE
229°			2800
1900			
2.2			2.7 NM
6.2 NM			GP 3.00° TCH 50
CATEGORY	A	B	C
LPV DA	690-1½ 394 (400-1½)		
LNAV/VNAV DA	1020-2½ 724 (800-2½)		
LNAV MDA	1020-¾ 724 (800-¾)	1020-2 724 (800-2)	1020-2½ 724 (800-2½)
CIRCLING	1020-1 714 (800-1)	1100-2¼ 794 (800-2¼)	1200-2¾ 894 (900-2¾)

NE-3, 31 DEC 2020 to 28 JAN 2021

NE-3, 31 DEC 2020 to 28 JAN 2021