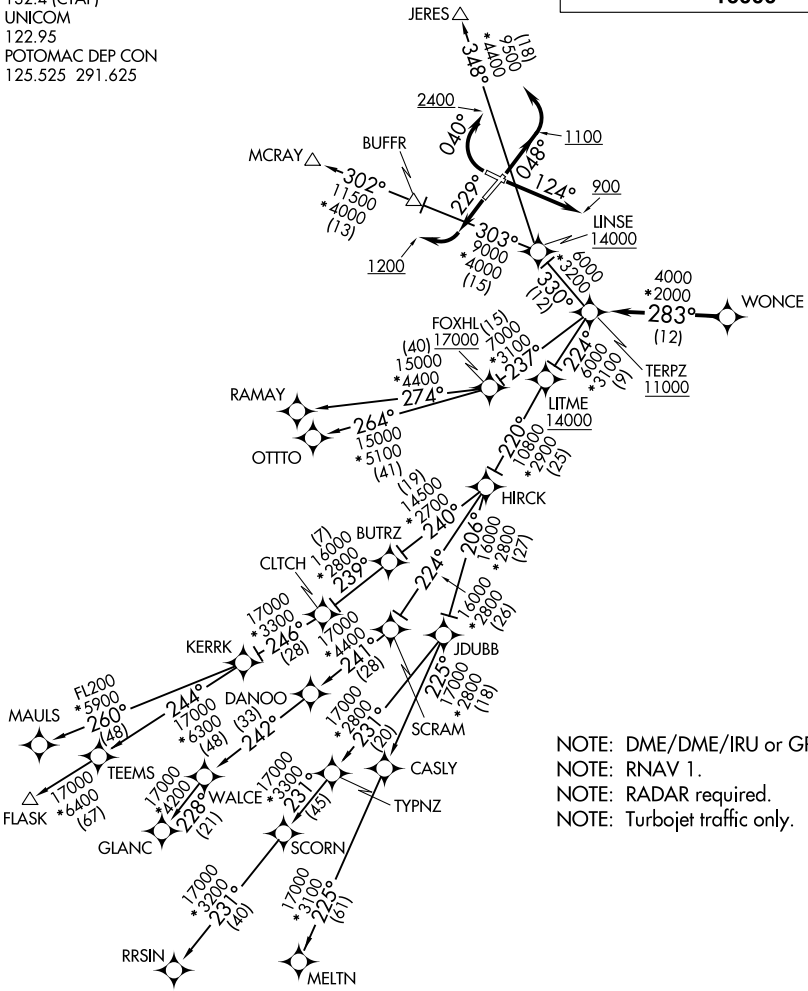


ATIS  
124.875  
CLNC DEL  
121.975  
GND CON  
121.975  
FREDERICK TOWER\*  
132.4 (CTAF)  
UNICOM  
122.95  
POTOMAC DEP CON  
125.525 291.625

**TOP ALTITUDE:**  
**RAMAY, OTTTO, MAULS, FLASK,**  
**RRSIN, GLANC, MELTN**  
**TRANSITIONS: 17000**  
**JERES, MCRAY TRANSITIONS:**  
**16000**



NOTE: DME/DME/IRU or GPS required.  
NOTE: RNAV 1.  
NOTE: RADAR required.  
NOTE: Turbojet traffic only.

**TAKEOFF MINIMUMS:**  
Rwy 23: Standard.  
Rwy 5: Standard with minimum climb of 260' per NM to 1100.  
Rwy 12: 500-2¾ or Standard with minimum climb of 395' per NM to 1000.  
Rwy 30: Standard with minimum climb of 285' per NM to 900.

NOTE: Chart not to scale.