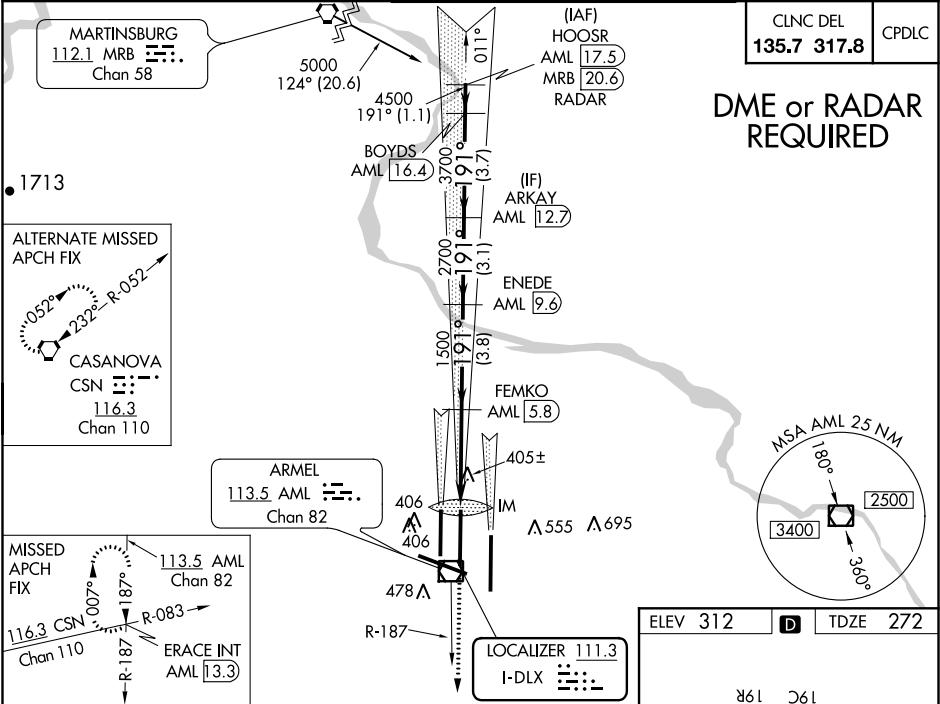


LOC I-DLX <b>111.3</b>	APP CRS <b>191°</b>	Rwy Idg <b>11089</b> TDZE <b>272</b> Apt Elev <b>312</b>
---------------------------	------------------------	--

ILS RWY 19C (CAT II & III)  
WASHINGTON DULLES INTL (IAD)

<p>▼ DME from AML VOR/DME. Simultaneous reception of I-DLX and AML DME required. Simultaneous approach authorized with ILS or LOC Rwy 19L, ILS Rwy 19L (Cat II), ILS or LOC/DME Rwy 19R, ILS Rwy 19R (Cat II), ILS Rwy 19R (Cat III).</p>	<p>ALSF-2 </p>	<p>MISSED APPROACH: Climb to 3000 via heading 191° and AML VOR/DME R-187 to ERACE INT/AML 13.3 DME and hold.</p>
---	--------------------	--

D-ATIS <b>134.85</b>	POTOMAC APP CON <b>120.45 306.925</b> (241°-330°) <b>128.525 306.925</b> (091°-240°) <b>126.1 338.25</b> (331°-090°)	DULLES TOWER <b>120.1 317.8</b> (Rwy 1R/19L) <b>120.25 348.6</b> (Rwy 1C/19C) <b>134.425 348.6</b> (Rwys 1L/19R and 12/30)	GND CON <b>121.9 317.8</b> (EAST) <b>121.625 348.6</b> (WEST)
-------------------------	---	---	---



HOOSR AML 17.5 RADAR	BOYDS AML 16.4	ARKAY AML 12.7	ENEDF AML 9.6	FEMKO AML 5.8	IM 369	3000 hdg 191°	AML R-187	ERACE INT AML 13.3
5000	4500	3700	2700	1500	1030			
GS 3.00° TCH 54								
	1.1 NM	3.7 NM	3.1 NM	3.8 NM	3.7 NM			
CATEGORY	A	B	C	D				
S-ILS 19C		CAT II	RA 108/12	100	DA 372			
S-ILS 19C		CAT IIIa	RVR 07					
S-ILS 19C		CAT IIIb	RVR 06					
S-ILS 19C		CAT IIIc	NA					

CATEGORY II & III ILS - SPECIAL AIRCREW  
& AIRCRAFT CERTIFICATION REQUIRED

