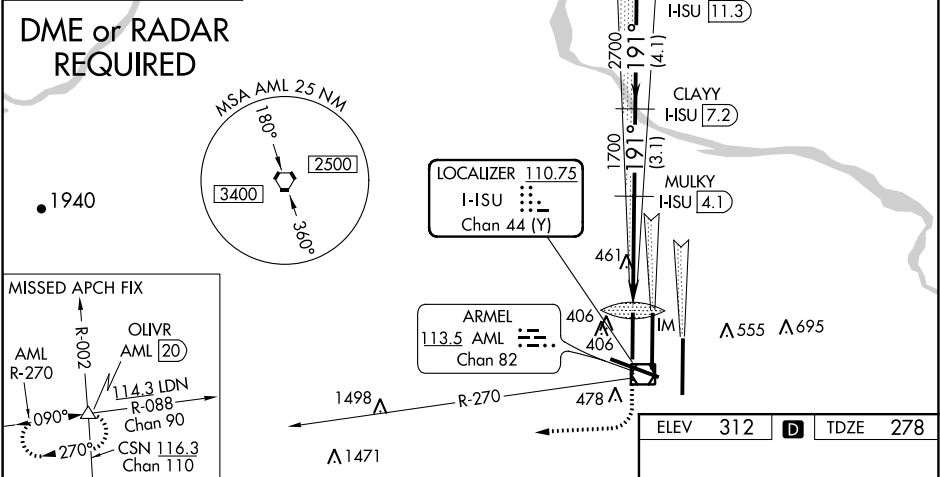
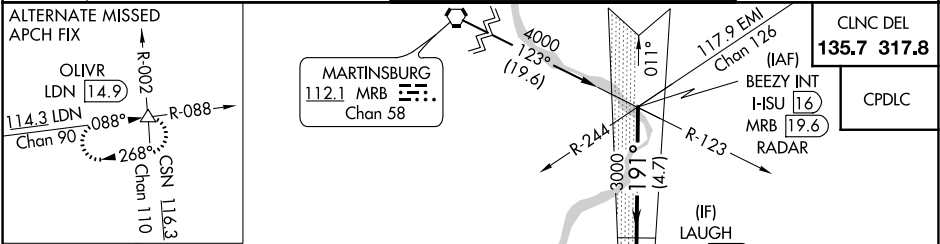


LOC/DME I-LSU 110.75 Chan 44 (Y)	APP CRS 191°	Rwy Idg TDZE Apt Elev 9400 278 312
--	------------------------	--

ILS RWY 19R (CAT II & III)
WASHINGTON DULLES INTL (IAD)

▽ Simultaneous approach authorized with ILS or LOC/DME ▲ Rwy 19C, ILS Rwy 19C (Cat II), ILS Rwy 19C (Cat III), Rwy 19L	ALSF-2 	MISSED APPROACH: Climb to 800 then climbing right turn to 5000 via AML VOR/DME R-270 to OLVR INT/ AML 20 DME and hold, continue climb-in-hold to 5000.
--	------------	--

D-ATIS 134.85	POTOMAC APP CON 120.45 306.925 (241°-330°) 128.525 306.925 (091°-240°) 126.1 338.25 (331°-090°)	DULLES TOWER 120.1 317.8 (Rwy 1R/19L) 120.25 348.6 (Rwy 1C/19C) 134.425 348.6 (Rwys 1L/19R and 12/30)	GND CON 121.9 317.8 (EAST) 121.625 348.6 (WEST)
-------------------------	---	---	---



BEEZY INT I-LSU [16] RADAR	VGSI and ILS glidepath not coincident (VGSI Angle 3.00/TCH 70).	800	5000	AML R-270	OLVR
4000	LAUGH I-LSU [11.3]	CLAY I-LSU [7.2]	MULKY I-LSU [4.1]	I-LSU DME ANTENNA	IM
GS 3.00° TCH 55	3000	2700	1700	378	1050
4.7 NM	4.1 NM	3.1 NM	4.3 NM		
CATEGORY	A	B	C	D	
S-ILS 19R	CAT II RA 103/12 100 DA 378				
S-ILS 19R	CAT IIIa RVR 07				
S-ILS 19R	CAT IIIb RVR 06				
S-ILS 19R	CAT IIIc NA				

CATEGORY II & III ILS - SPECIAL AIRCREW & AIRCRAFT CERTIFICATION REQUIRED

TDZ/CL Rwys 1C, 1L, 1R, 12, 19C and 19R
REIL Rwy 30
HIRL all Rwys

NE-3, 31 DEC 2020 to 28 JAN 2021

NE-3, 31 DEC 2020 to 28 JAN 2021