

LOC/DME I-IAD	APP CRS	Rwy Idg	11500
<b>110.1</b>	<b>011°</b>	TDZE	<b>312</b>
Chan 38		Apt Elev	<b>312</b>

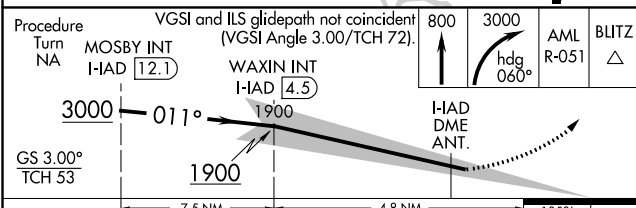
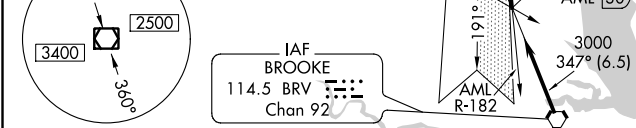
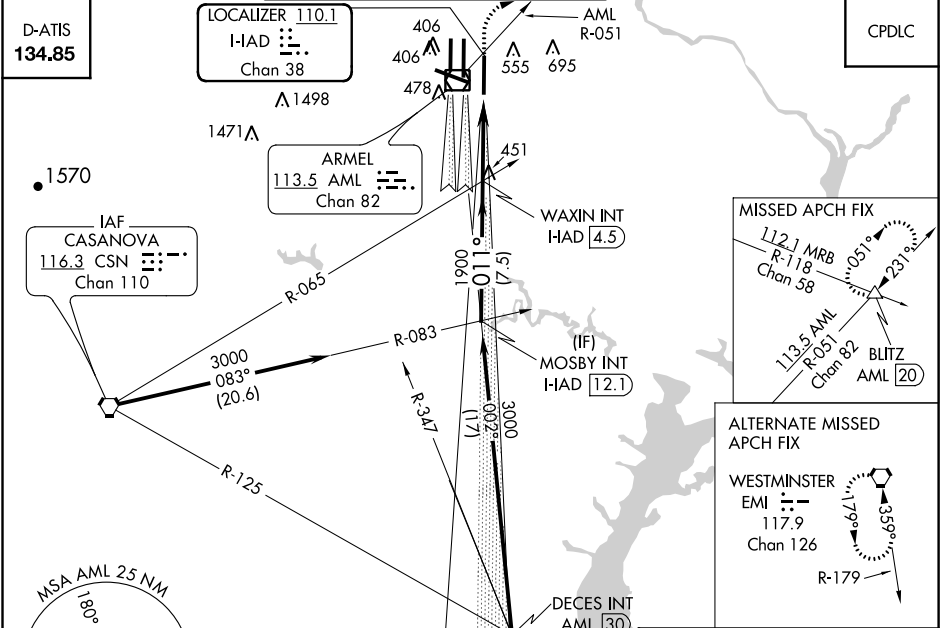
ILS RWY 1R (CAT II & III)  
WASHINGTON DULLES INTL (IAD)

**Simultaneous approach authorized with Rwy 1C or 1L.**

**ALSIF-2**

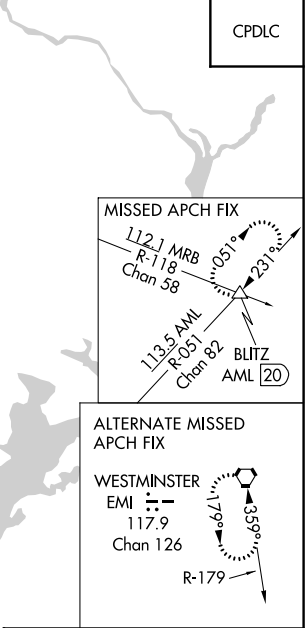
**MISSED APPROACH:** Climb to 800 then climbing right turn to 3000 via heading 060° and AML VOR/DME R-051 to BLITZ INT/AML 20 DME and hold.

POTOMAC APP CON <b>120.45 306.925</b> (241°-330°) <b>128.525 306.925</b> (091°-240°) <b>126.1 338.25</b> (331°-090°)	DULLES TOWER <b>120.1 317.8</b> (Rwy 1R/19L) <b>120.25 348.6</b> (Rwy 1C/19C) <b>134.425 348.6</b> (Rwys 1L/19R and 12/30)	GND CON <b>121.9 317.8</b> (EAST) <b>121.625 348.6</b> (WEST)	CLNC DEL <b>135.7 317.8</b>
---	---	---	--------------------------------

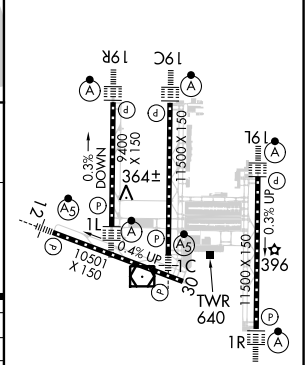


CATEGORY	A	B	C	D
S-ILS 1R	CAT II	RA 94/12	100	DA 412
S-ILS 1R		CAT IIIa	RVR 07	
S-ILS 1R		CAT IIIb	RVR 06	
S-ILS 1R		CAT IIIc	NA	

CATEGORY II & III ILS - SPECIAL AIRCREW  
& AIRCRAFT CERTIFICATION REQUIRED



ELEV 312	<b>D</b>	TDZE 312
----------	----------	----------



TDZ/CL Rwys 1C, 1L, 1R, 12, 19C and 19R  
REIL Rwy 30  
HIRL all Rwys

NE-3, 31 DEC 2020 to 28 JAN 2021

NE-3, 31 DEC 2020 to 28 JAN 2021