

WAAS CH 86709 W19D	APP CRS 191°	Rwy Idg TDZE 278 Apt Elev 312
--	------------------------	---

RNAV (GPS) RWY 19R

WASHINGTON DULLES INTL (IAD)

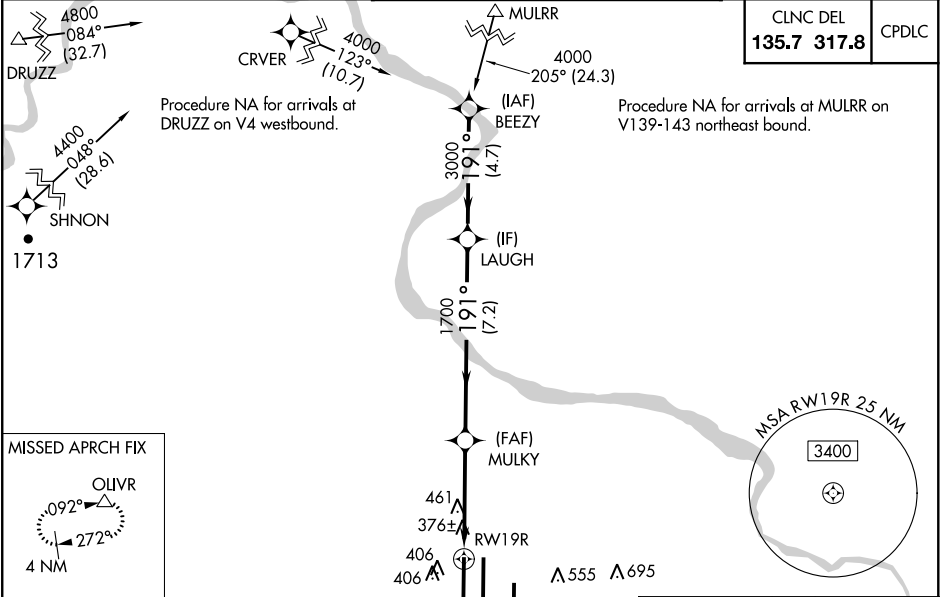
▼

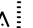




For uncompensated Baro-VNAV systems, LNAV/VNAV NA below -15°C (5°F) or above 48°C (118°F). DME/DME RNP -0.3 NA. Simultaneous approach authorized with ILS or LOC Rwy 19L, ILS Rwy 19L (Cat II). LNAV procedure NA during simultaneous operations. Use of FD or AP providing RNAV track guidance required during simultaneous operations.

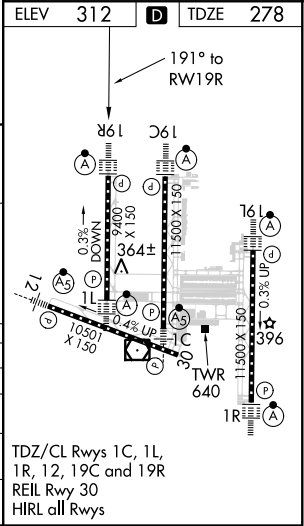
ALSIF-2

MISSED APPROACH: Climb to 5000 direct HIMRA and on 280° track to OLIVR and hold, continue climb-in-hold to 5000.

D-ATIS 134.85	POTOMAC APP CON 120.45 306.925 (241°-330°) 128.525 306.925 (091°-240°) 126.1 338.25 (331°-090°)	DULLES TOWER 120.1 317.8 (Rwy 1R/19L) 120.25 348.6 (Rwy 1C/19C) 134.425 348.6 (Rwy 1L/19R and 12/30)	GND CON 121.9 317.8 (EAST) 121.625 348.6 (WEST)
-------------------------	---	--	---



		Δ 1498		 478 Δ					
		1471 Δ		280°		 HIMRA			
Procedure	Turn NA	VGSI and RNAV glidepath not coincident (VGSI Angle 3.00/TCH 70).				5000	HIMRA	tr 280°	OLVR
	LAUGH	3000	191°	MULKY	1700				Δ
	GP 3.00° TCH 55					*1.2 NM to RW19R		*LNAV only.	
									
		7.2 NM		3.1 NM		1.2			
CATEGORY		A	B	C	D				
LPV DA		478/18		200 (200-½)					
LNAV/VNAV DA		714/50		436 (500-1)					
LNAV MDA		720/24	442 (500-½)	720/40 442 (500-¾)		720/50 442 (500-1)			
CIRCLING		940-1	628 (700-1)	940-1¾ 628 (700-1¾)		940-2 628 (700-2)			



NE-3, 31 DEC 2020 to 28 JAN 2021

NE-3, 31 DEC 2020 to 28 JAN 2021