

APP CRS	Rwy Idg	11089
191°	TDZE	272
	Apt Elev	312

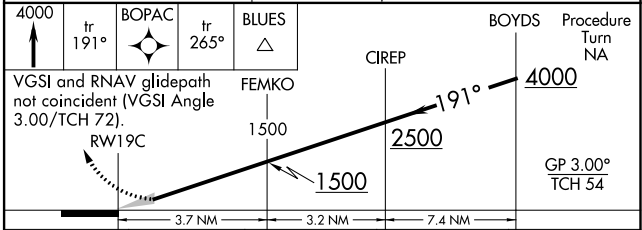
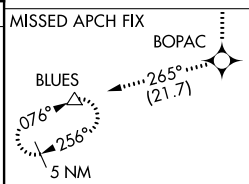
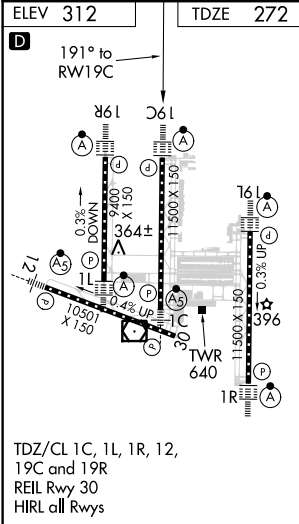
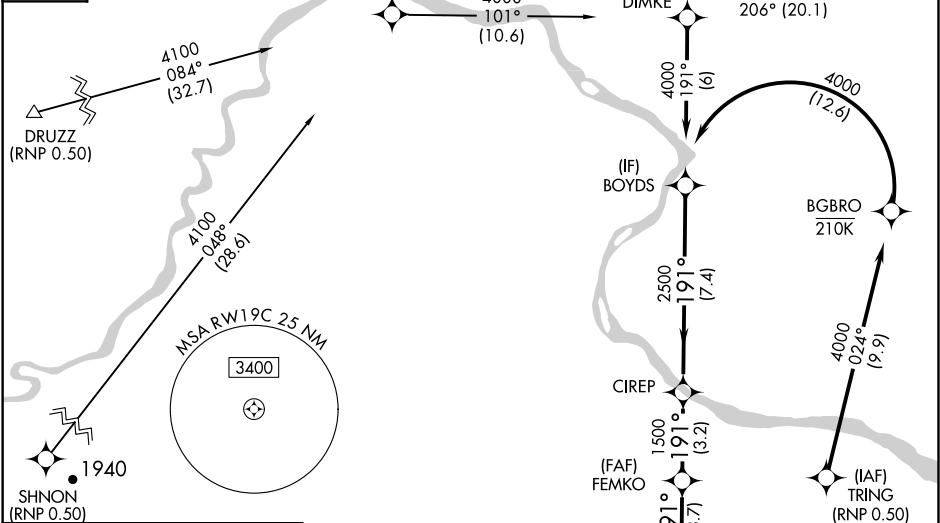
RNAV (RNP) Z RWY 19C

WASHINGTON DULLES INTL (IAD)

GPS required. For uncompensated Baro-VNAV systems, procedure NA below -14°C (6°F) or above 47°C (117°F). For inoperative ALSF, increase RNP 0.30 visibility to 1 3/4. Simultaneous approach authorized with ILS or LOC Rwy 19L, ILS Rwy 19L (Cat II). Use of FD or AP providing RNAV track guidance required during simultaneous operations.	ALSF-2 	MISSED APPROACH: Climb to 4000 via track 191° to BOPAC and via track 265° to BLUES and hold.
---	-------------------	---

POTOMAC APP CON 120.45 306.925 (241°-330°) 128.525 306.925 (091°-240°) 126.1 338.25 (331°-090°)	DULLES TOWER 120.1 317.8 (Rwy 1R/19L) 120.25 348.6 (Rwy 1C/19C) 134.425 348.6 (Rwys 1L/19R and 12/30)	GND CON 121.9 317.8 (EAST) 121.625 348.6 (WEST)	CLNC DEL 135.7 317.8
--	--	--	---------------------------------------

D-ATIS 134.85	CPDLC
--------------------------------	--------------



CATEGORY	A	B	C	D
RNP 0.30 DA	740/60	468 (500-1 1/4)		

AUTHORIZATION REQUIRED

NE-3, 31 DEC 2020 to 28 JAN 2021

NE-3, 31 DEC 2020 to 28 JAN 2021