

|         |          |       |
|---------|----------|-------|
| APP CRS | Rwy Idg  | 11500 |
| 011°    | TDZE     | 312   |
|         | Apt Elev | 312   |

RNAV (RNP) Z RWY 1R  
WASHINGTON DULLES INTL (IAD)

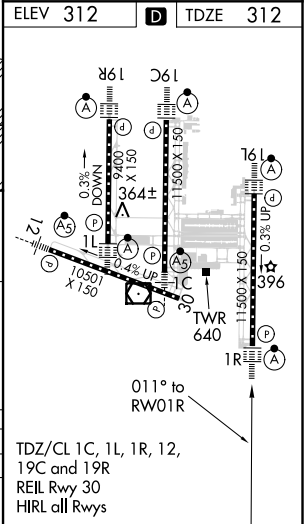
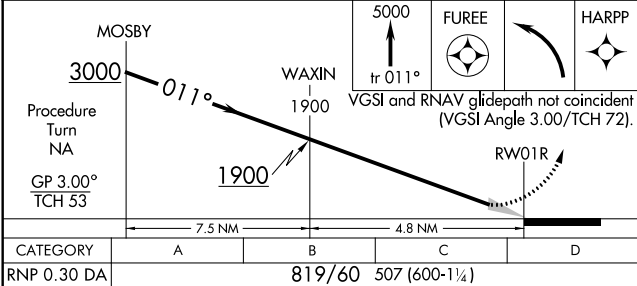
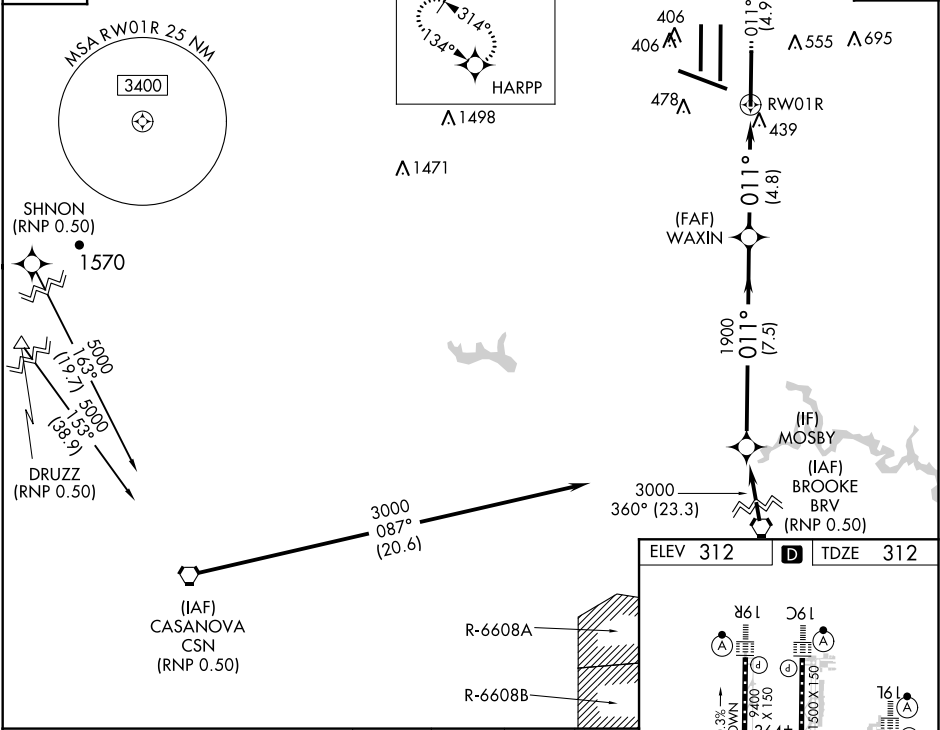
GPS required. For uncompensated Baro-VNAV systems, procedure NA below -14°C (6°F) or above 48°C (119°F). For inoperative ALSF-2, increase RNP 0.30 visibility to 1 3/4. Simultaneous approach authorized with ILS or LOC/DME Rwy 1L, ILS Rwy 1L (Cat III), ILS Rwy 1L (Cat III). Use of FD or AP providing RNAV track guidance required during simultaneous operations.

ALSF-2

MISSED APPROACH: Climb to 5000 via track 011° to FUREE and left turn direct HARPP and hold.

|  |  |   |                         |
|--|--|---|-------------------------|
| POTOMAC APP CON<br>120.45 306.925 (241°-330°)<br>128.525 306.925 (091°-240°)<br>126.1 338.25 (331°-090°) | DULLES TOWER<br>120.1 317.8 (Rwy 1R/19L)<br>120.25 348.6 (Rwy 1C/19C)<br>134.425 348.6 (Rwys 1L/19R and 12/30) | GND CON<br>121.9 317.8 (EAST)<br>121.625 348.6 (WEST) | CLNC DEL<br>135.7 317.8 |
|--|--|---|-------------------------|

|                  |  |   |       |
|------------------|--|---|-------|
| D-ATIS<br>134.85 | MISSED APCH FIX<br>6 NM<br>314°<br>134°<br>HARPP<br>Λ 1498 | FUREE<br>304° (25.2)<br>406<br>406<br>478<br>Λ 555 Λ 695<br>RW01R<br>439<br>011° (4.9)<br>011° (4.8)<br>(FAF) WAXIN<br>1900 011° (7.5)<br>(IF) MOSBY<br>(IAF) BROOKE BRV (RNP 0.50)<br>3000 360° (23.3) | CPDLC |
|------------------|--|---|-------|



|             |                        |   |   |   |
|-------------|------------------------|---|---|---|
| CATEGORY    | A                      | B | C | D |
| RNP 0.30 DA | 819/60 507 (600-1 1/4) |   |   |   |

AUTHORIZATION REQUIRED