

WAAS CH 40305 W19B	APP CRS 191°	Rwy Idg 11089 TDZE 272 Apt Elev 312
--	------------------------	--

RNAV (GPS) Y RWY 19C
WASHINGTON DULLES INTL (IAD)

▼ For inoperative ALSF-2, increase LNAV Cat D visibility to RVR 6000. For uncompensated Baro-VNAV systems, LNAV/VNAV NA below -15°C (5°F) or above 47°C (116°F). DME/DME RNP-0.3 NA. Simultaneous approach authorized with ILS or LOC Rwy 19L, ILS Rwy 19L (Cat II). LNAV procedure NA during simultaneous operations. Use of FD or AP required for LNAV track guidance required during simultaneous operations.

ALSE-2



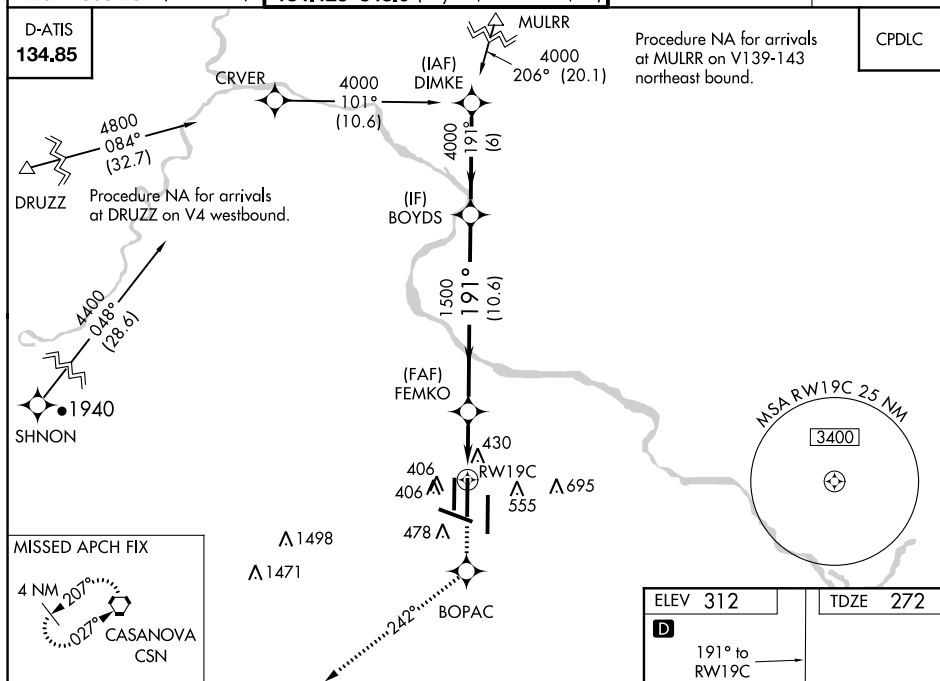
MISSED APPROACH:
Climb to 4000 direct
BOPAC and on 242°
track to CSN VORTAC
and hold.

POTOMAC APP CON	DULLES TOWER	GND CON	CLNC DEL
120.45 306.925 (241°-330°)	120.1 317.8 (Rwy 1R/19L)	121.9 317.8 (EAST)	
128.525 306.925 (091°-240°)	120.25 348.6 (Rwy 1C/19C)	121.625 348.6 (WEST)	135.7 317.8
126.1 338.25 (331°-090°)	134.425 348.6 (Rwys 1L/19R and 12/30)		

D-ATIS
134.85

Procedure NA for arrivals
at MULRR on V139-143
northeast bound.

CPDLC



4000

BOPAC

tr 242°

CSN

VGS1 and RNAV glidepath not coincident (VGS1 Angle 3.00/TCH 72).

BOYDS

4000

Procedure Turn NA

GP 3.00° TCH 54

*LNAV only.

*1.1 NM to RW19C

RW19C

FEMKO

191°

1500

1.1

2.6 NM

10.6 NM

CATEGORY	A	B	C	D
LPV DA	472/18	200 (200-½)		
LNAV/VNAV DA	717/50	445 (500-1)		
LNAV MDA	700/24	428 (400-½)	700/40 428 (400-¾)	700/50 428 (400-1)
CIRCLING	940-1	628 (700-1)	940-1¾ 628 (700-1¾)	940-2 628 (700-2)

