

WAAS CH 58105 W19A	APP CRS 191°	Rwy Idg 11500 TDZE 302 Apt Elev 312
--	------------------------	--

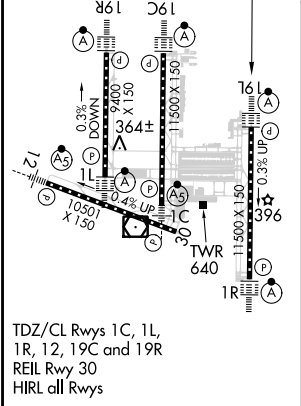
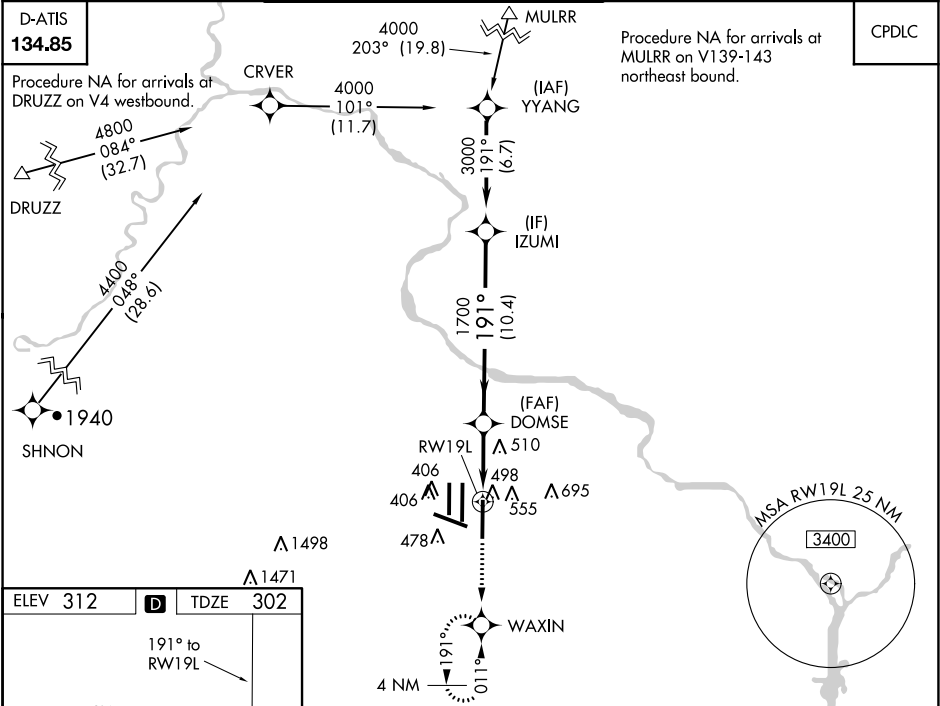
RNAV (GPS) Y RWY 19L

WASHINGTON DULLES INTL (IAD)

▼ For uncompensated Baro-VNAV systems, LNAV/VNAV NA below -15°C (5°F) or above 48°C (118°F). DME/DME RNP-0.3 NA. Simultaneous approach authorized with ILS or LOC/DME Rwy 19R, ILS Rwy 19R (Cat II), ILS Rwy 19R (Cat III). LNAV procedure NA during simultaneous operations. Use of FD or AP providing RNAV track guidance required during simultaneous operations. **RVR 1800 authorized with use of FD or AP or HUD to DA.

ALSF-2 	MISSED APPROACH: Climb to 2000 direct WAXIN and hold.
------------	---

POTOMAC APP CON 120.45 306.925 (241°-330°) 128.525 306.925 (091°-240°) 126.1 338.25 (331°-090°)	DULLES TOWER 120.1 317.8 (Rwy 1R/19L) 120.25 348.6 (Rwy 1C/19C) 134.425 348.6 (Rwys 1L/19R and 12/30)	GND CON 121.9 317.8 (EAST) 121.625 348.6 (WEST)	CINC DEL 135.7 317.8
---	---	---	--------------------------------



2000	WAXIN	VGSi and RNAV glidepath not coincident (VGSi Angle 3.00°/TCH 75).		IZUMI
*LNAV only.		*1.4 NM to RWY19L		3000
DOMSE		191°		Procedure Turn NA
1700		GP 3.00°		TCH 55
CATEGORY	A	B	C	D
LPV DA**	502/24 200 (200-½)			
LNAV/ VNAV DA	829/60 527 (600-1¼)			
LNAV MDA	820/24	518 (600-½)	820/50 518 (600-1)	820/60 518 (600-1¼)
CIRCLING	940-1	628 (700-1)	940-1¾ 628 (700-1¾)	940-2 628 (700-2)

NE-3, 31 DEC 2020 to 28 JAN 2021

NE-3, 31 DEC 2020 to 28 JAN 2021