

WAAS CH <b>97509</b> <b>W01B</b>	APP CRS <b>011°</b>	Rwy Idg <b>11500</b> TDZE <b>286</b> Apt Elev <b>312</b>
--	------------------------	--

RNAV (GPS) Y RWY 1C  
WASHINGTON DULLES INTL (IAD)

For uncompensated Baro-VNAV systems, LNAV/VNAV NA below -15°C (5°F) or above 48°C (118°F). DME/DME RNP-0.3 NA. Simultaneous approach authorized with ILS or LOC/DME Rwy 1L, ILS Rwy 1L (Cat III), ILS Rwy 1L (Cat III), ILS or LOC Rwy 1R, ILS Rwy 1R (Cat III), ILS Rwy 1R (Cat III). LNAV procedure NA during simultaneous operations. Use of FD or AP providing RNAV track guidance required during simultaneous operations.

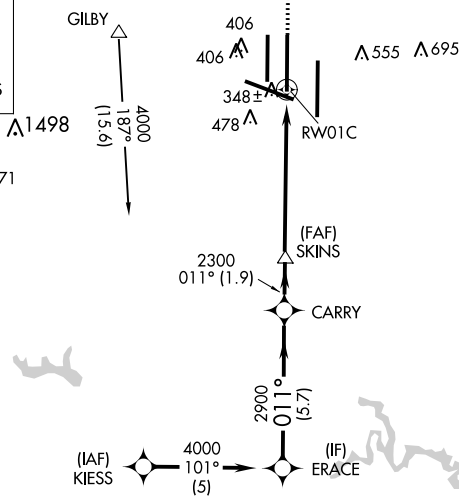
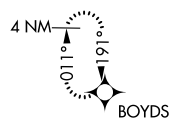
MALS®



**MISSED APPROACH:**  
Climb to 3000 direct  
BOYDS and hold.

D-ATIS	POTOMAC APP CON	DULLES TOWER	GND CON
120.45 306.925 (241°-330°)	120.1 317.8 (Rwy 1R/19L)	121.9 317.8 (EAST)	
128.525 306.925 (091°-240°)	120.25 348.6 (Rwy 1C/19C)	121.625 348.6 (WEST)	
126.1 338.25 (331°-090°)	134.425 348.6 (Rwys 1L/19R and 12/30)		

MISSED APCH FIX

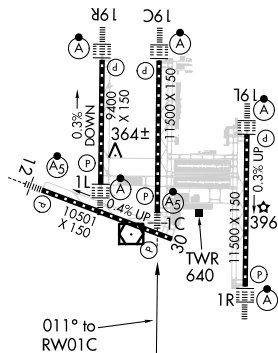
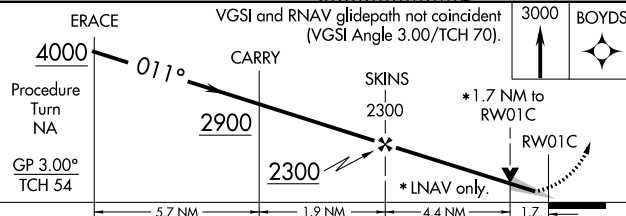


CLNC DEL  
**35.7 317**

CPDLC

MSA RW01C 25 NM  
3400

ELEV 312	<b>D</b>	TDZE 286
TDZ/CL Rwy 1C, 1L, 1R, 12, 19C, and 19R		
REIL Rwy 30		
HIRL all Rwys		



CATEGORY	A	B	C	D
LPV DA **	486/24 200 (200-½)			
RNAV/DA	801/60 515 (600-1¼)			
RNAV MDA	900/24 614 (600-½)	900/60 614 (600-1¼)	900-1½ 614 (600-½)	
CIRCLING	940-1 628 (700-1)	940-1¼ 628 (700-1¼)	940-2 628 (700-2)	