




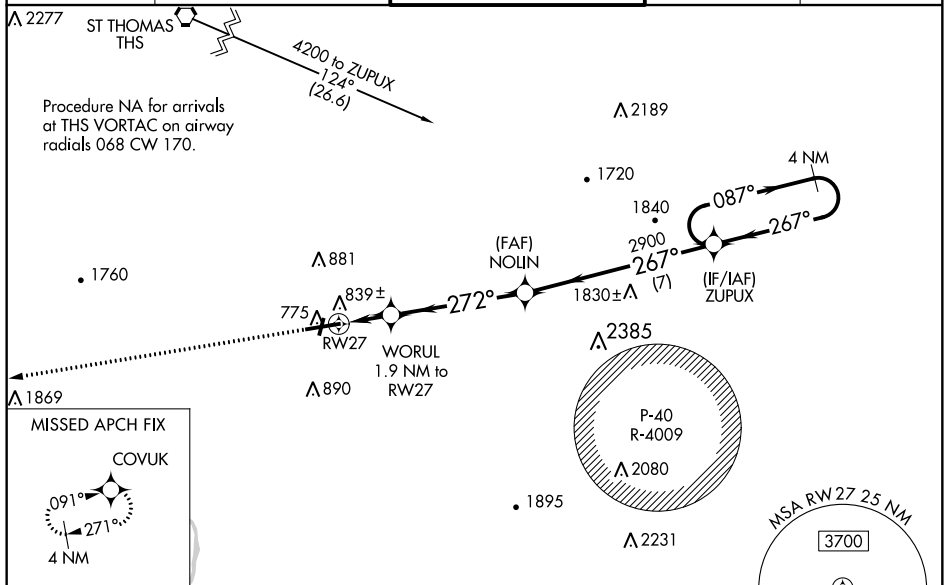
WAAS CH 86911 W27A	APP CRS 272°	Rwy Idg 7000 TDZE 701 Apt Elev 703
--	------------------------	---

RNAV (GPS) RWY 27

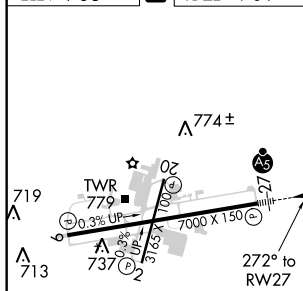
HAGERSTOWN RGNL-RICHARD A HENSON FIELD (HGR)

	<p>Rwy 20 helicopter visibility reduction below 1 SM NA. Circling Rwy 20 NA at night. For uncompensated Baro-VNAV systems, LNAV/VNAV NA below -14°C (7°F) or above 54°C (130°F). DME/DME RNP-0.3 NA. When local altimeter setting not received, use Martinsburg altimeter setting and increase all DA 70 feet and all MDA 80 feet; increase LNAV/VNAV all Cats, LNAV Cats C-D and Circling Cat D visibility ¼ mile. VDP and Baro-VNAV NA with Martinsburg altimeter setting.</p>	<div data-bbox="760 172 798 177" style="text-align: center;">  MALSR </div> <div data-bbox="760 178 798 183" style="text-align: center;">  A5 </div> <div data-bbox="808 172 968 183" style="text-align: center;"> <p>MISSED APPROACH: Climb to 3600 direct COVUK and hold.</p> </div>
---	--	---

ASOS 126.375	POTOMAC APP CON 126.825 239.025	HAGERSTOWN TOWER ★ 120.3 (CTAF) 0 225.4	GND CON 120.8	UNICOM 122.95
-----------------	------------------------------------	--	------------------	------------------



ELEV 703	D	TDZE 701
----------	----------	----------

[illegible]