

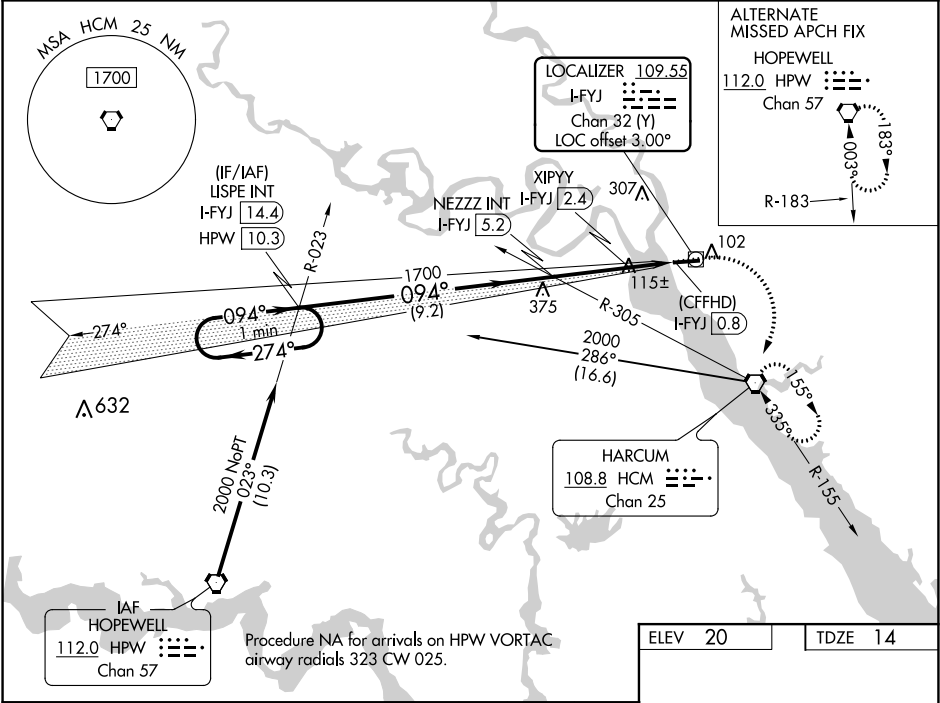
LOC/DME I-FYJ	APP CRS	Rwy Idg	5000
109.55	094°	TDZE	14
Chan 32 (Y)		Apt Elev	20


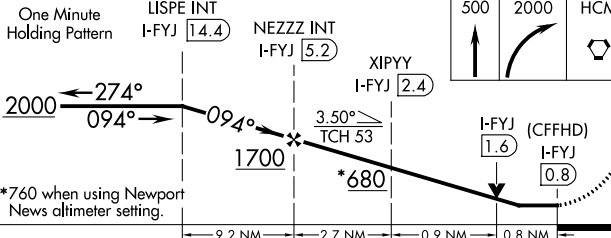


LOC RWY 10
MIDDLE PENINSULA RGNL (F'YJ)

NA When local altimeter setting not received, use Newport News altimeter setting and increase all MDA 80 feet and increase S-10 Cat B and Circling Cat B visibility ¼ SM. VDP NA when using Newport News altimeter setting.

MISSED APPROACH: Climb to 500 then climbing right turn to 2000 direct HCM VORTAC and hold, continue climb-in-hold to 2000.

AWOS-3 132.825	POTOMAC APP CON 126.4 282.375	UNICOM 123.0 (CTAF) 0
-------------------	----------------------------------	--------------------------



One Minute Holding Pattern	LISPE INT I-FYJ 14.4		NEZZZ INT I-FYJ 5.2		XIPYY I-FYJ 2.4		500 ↑	2000 ↷	HCM 
									
CATEGORY	A		B		C		D		
S-10	680-1		666 (700-1)				NA		
 CIRCLING	680-1		660 (700-1)				NA		
XIPYY FIX MINIMUMS									
S-10	380-1		366 (400-1)				NA		
 CIRCLING	480-1 460 (500-1)		620-1 600 (600-1)				NA		

ELEV 20 TDZE 14

094° 4.4 NM from FAF

MIRL Rwy 10-28 0
REIL Rws 10 and 28 0

FAF to MAP 4.4 NM

Knots	60	90	120	150	180
Min:Sec	4:24	2:56	2:12	1:46	1:28

NE-3, 31 DEC 2020 to 28 JAN 2021

NE-3, 31 DEC 2020 to 28 JAN 2021