

COPTER RNAV (GPS) RWY 14

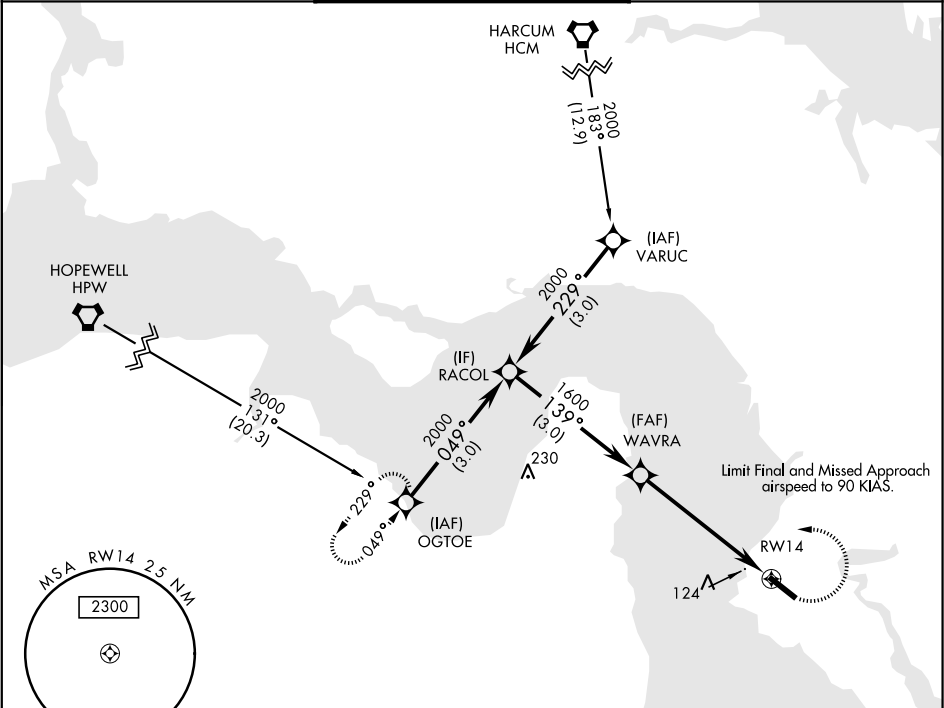
APCH CRS	Rwy Idg	3025
139°	TDZE	11
	Arpt Elev	11

AL-5211 [USA]

FELKER AAF (KFAF)

DME/DME RNP - 0.3 NA	ODALS	MISSED APPROACH: Climbing left turn to 2000 direct OGTOE and hold.
When local altimeter setting not received, use Newport News/Williamsburg Intl altimeter setting. VDP NA when using Newport News/Williamsburg Intl altimeter setting.		

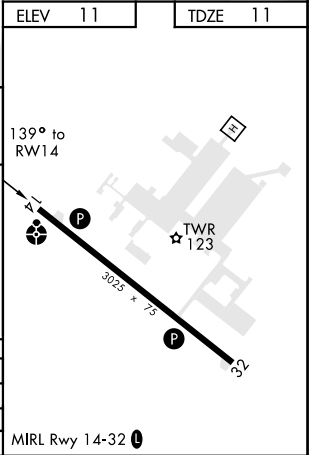
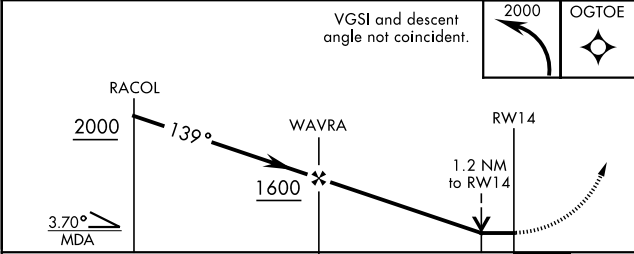
NORFOLK APP CON 125.7 335.625	FELKER TOWER ★ 126.3 (CTAF) 0 269.25	GND CON 121.35 229.4
----------------------------------	---	-------------------------



NE-3, 31 DEC 2020 to 28 JAN 2021

NE-3, 31 DEC 2020 to 28 JAN 2021

NOT FOR CIVIL USE



CATEGORY	COPTER		
LNAV MDA	420-¾	409	(500-¾)
NEWPORT NEWS/WILLIAMSBURG INTL ALTIMETER			
LNAV MDA	440-¾	429	(500-¾)

COPTER RNAV (GPS) RWY 14