

FORT EUSTIS, VIRGINIA

RNAV (GPS) RWY 14

APCH CRS	Rwy Idg	3025
139°	TDZE	11
	Arpt Elev	11

AL-5211 [USA]

FELKER AAF (KFAF)

DME/DME RNP - 0.3 NA

When local altimeter setting not received, use Newport News/Williamsburg Intl altimeter setting. Visibility reduction by helicopters NA.

ODALS

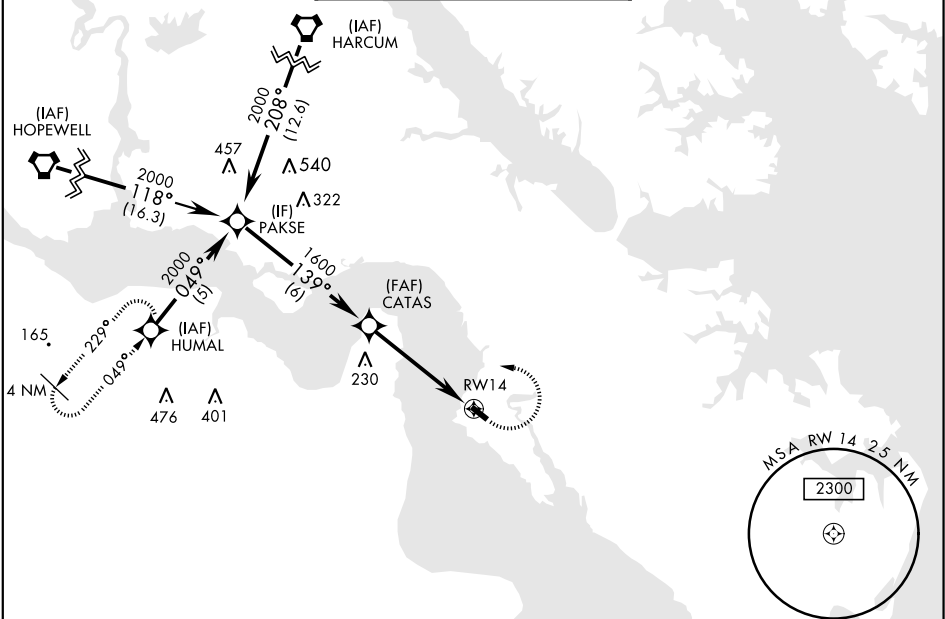


MISSED APPROACH: Climbing left turn to 2000 direct HUMAL and hold.

NORFOLK APP CON  
125.7 335.625

FELKER TOWER ★  
126.3 (CTAF) 0 269.25

GND CON  
121.35 229.4



NOT FOR CIVIL USE

ELEV 11

TDZE 11

Visual Segment - Obstacles

2000

PAKSE

139°

CATAS

1600

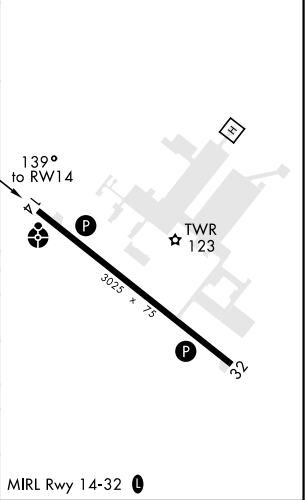
RW14

4.8 NM

2000

HUMAL

CATEGORY	A	B	C	D
LNAV MDA	420-¾	409 (500-¾)	NA	
CIRCLING	440-1 429 (500-1)	480-1 469 (500-1)	NA	
NEWPORT NEWS/WILLIAMSBURG INTL ALTIMETER				
LNAV MDA	440-¾	429 (500-¾)	NA	
CIRCLING	460-1 449 (500-1)	500-1 489 (500-1)	NA	



FORT EUSTIS, VIRGINIA

37°08'N-76°37'W

FELKER AAF (KFAF)

Amdt 2B 20JUN19

RNAV (GPS) RWY 14

NE-3, 31 DEC 2020 to 28 JAN 2021

NE-3, 31 DEC 2020 to 28 JAN 2021