

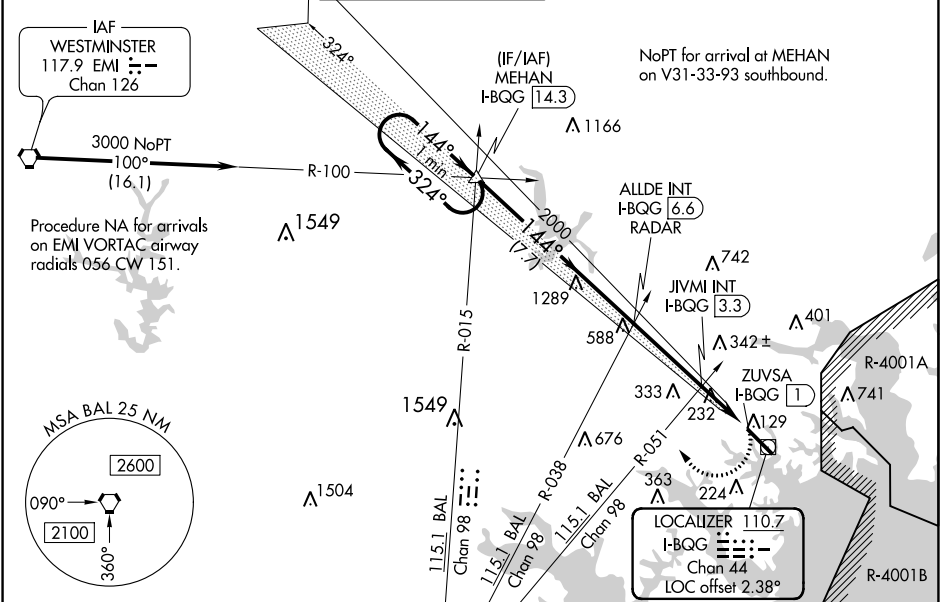
LOC/DME I-BQG 110.7 Chan 44	APP CRS 144°	Rwy Idg TDZE 22 Apt Elev 22	6997
---	------------------------	---	-------------

LOC RWY 15
MARTIN STATE (MTN)

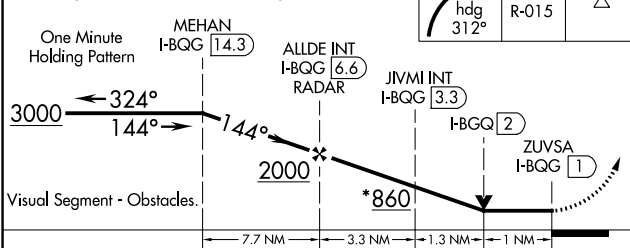
When local altimeter setting not received, use Baltimore/Washington Intl Thurgood Marshall altimeter setting and increase all MDA 60 feet and increase S-15 Cat A and Circling Cats C and D visibility ¼ mile and increase JIVMI Fix Minimums S-15 Cats C and D visibility ½ mile and Circling Cat D visibility ¼ mile. Rwy 15 helicopter visibility reduction below ¾ SM NA.

MISSED APPROACH: Climbing right turn to 3000 on heading 312° and BAL VORTAC R-015 to MEHAN INT/I-BQG 14.3 DME and hold.

ATIS 124.925	POTOMAC APP CON 119.0 282.275	MARTIN TOWER * 121.3 (CTAF) 0 254.425	GND CON 121.8 253.4	CLNC DEL 121.8 (when twr closed)	UNICOM 122.95
------------------------	---	--	-------------------------------	---	-------------------------



*920 when using Baltimore/Washington Intl Thurgood Marshall altimeter setting.



CATEGORY	A	B	C	D
S-15	860-1 838 (900-1)	860-1¼ 838 (900-1¼)	860-2½ 838 (900-2½)	838 (900-2½)
CIRCLING	860-1¼ 838 (900-1¼)	838 (900-1¼)	860-2½ 838 (900-2½)	860-2¾ 838 (900-2¾)
JIVMI FIX MINIMUMS (DUAL VOR RECEIVERS OR DME REQUIRED)				
S-15	500-1 478 (500-1)	500-1¾ 478 (500-1¾)	500-1¾ 478 (500-1¾)	478 (500-1¾)
CIRCLING	560-1 538 (600-1)	538 (600-1)	560-1½ 538 (600-1½)	680-2 658 (700-2)

