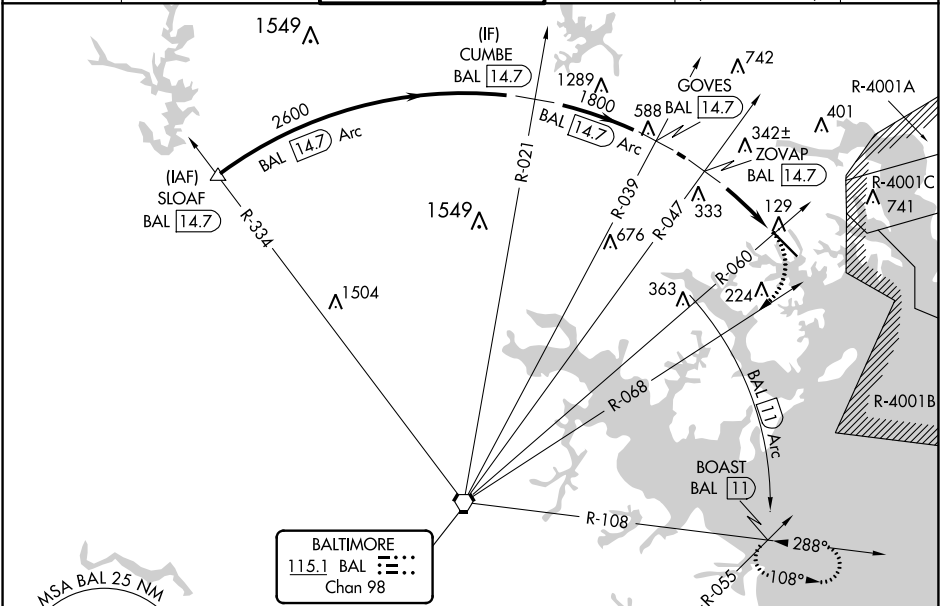


VORTAC BAL	BAL	Rwy Idg	6997
115.1	14.7	TDZE	22
Chan 98	Arc	Apt Elev	22

VOR or TACAN RWY 15
MARTIN STATE (MTN)

DME required.	MISSED APPROACH: Climbing right turn to 2500 on BAL VORTAC R-068 and BAL 11 DME Arc clockwise to BOAST INT/BAL 11 DME and hold.
▼ Rwy 15 helicopter visibility reduction below ¾ SM NA. When local altimeter setting not received, use Baltimore/Washington Intl Thurgood Marshall altimeter setting and increase all MDA 60 feet, and increase S-15 Cat B visibility ¼ SM, Cat C/D ½ SM and Circling Cats B/C ¼ SM.	

ATIS 124.925	POTOMAC APP CON 119.0 282.275	MARTIN TOWER ★ 121.3(CTAF) 0 254.425	GND CON 121.8 253.4	CLNC DEL 121.8 (when twr closed)	UNICOM 122.95
-----------------	----------------------------------	---	------------------------	--	------------------



SLOAF BAL 14.7		CUMBE BAL 14.7		GOVES BAL 14.7		2500 BAL 11 Arc CW		BOAST INT	
2600		2600		1800		ZOVAP BAL 14.7		BAL R-060 14.7	
1260									
CATEGORY	A	B	C	D					
S-15	920-1¼	898 (900-1¼)	920-2½	898 (900-2½)					
CIRCLING	920-1¼	898 (900-1¼)	920-2¾ 898 (900-2¾)	920-3 898 (900-3)					

Rwy 33 Idg 8100'
(Military Operations only)
Rwy 15 take-off 8100'
(Military Operations only)

HIRL Rwy 15-33 0
REIL Rwy 15 and 33 0