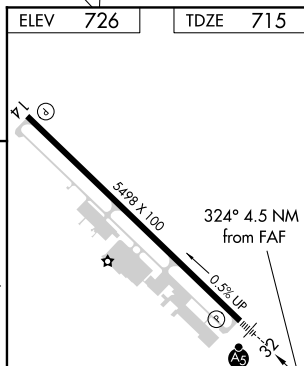
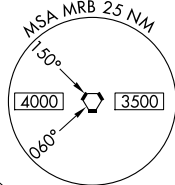



ILS or LOC RWY 32
WINCHESTER RGNL (OKV)

MALSR
A5

MISSED APPROACH: Climb to 1400 then climbing right turn to 3700 via heading 160° and I-TZX SE course to CLADD INT/I-TZX 12.6 DME and hold.

UNICOM
122.7 (CTAF) 

REIL Rwy 14 **L**
HIRL Rwy 14-32 **L**

NE-3, 31 DEC 2020 to 28 JAN 2021