

WAAS CH 97512 W32A	APP CRS 324°	Rwy Idg TDZE 715 Apt Elev 726
--	------------------------	---

RNAV (GPS) RWY 32

WINCHESTER RGNL (OKV)

RNP APCH

▼

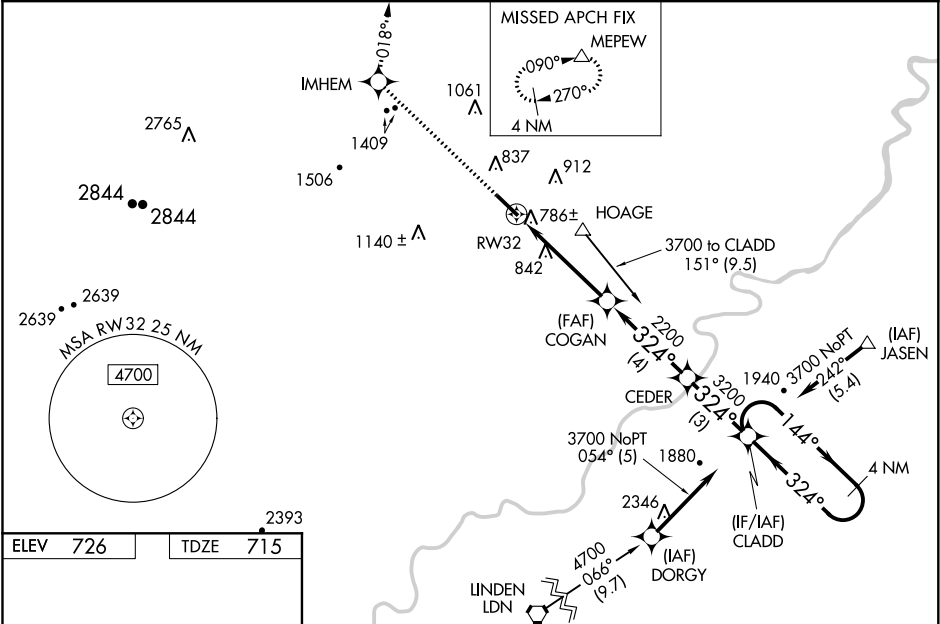
⚠

Baro-VNAV NA when using Martinsburg altimeter setting. For uncompensated Baro-VNAV systems, LNAV/VNAV NA below -16°C or above 47°C.
Rwy 32 helicopter visibility reduction below ¾ SM NA. When local altimeter setting not received, use Martinsburg altimeter setting and increase all DA 63 feet and all MDA 80 feet, and LNAV/VNAV all Cats and Circling Cat C visibility ¼ mile. For inoperative MALSR, increase LNAV Cats A, B and C visibility to 1 mile and LNAV Cat D visibility to 1½ mile. Inoperative table does not apply to LPV. For inoperative MALSR when using Martinsburg altimeter setting, increase LPV all Cats and LNAV Cats A and B visibility to 1 mile. VDP NA when using Martinsburg altimeter setting.

MALSR

MISSED APPROACH:
Climb to 5000 direct IMHEM and via track 018° to MEPEW and hold, continue climb-in-hold to 5000.

AWOS-3 124.85	POTOMAC APP CON 120.45 306.925	CLNC DEL 126.15	UNICOM 122.7 (CTAF) 0
-------------------------	--	---------------------------	---------------------------------



ELEV 726

TDZE 715

5000

IMHEM

tr 018°

MEPEW

CLADD

4 NM Holding Pattern

*LNAV only

*1.1 NM to RW32

CEDER

COGAN

RW32

2200

3200

324°

144°

3700

GP 3.00° TCH 44

1.1

3.4 NM

4 NM

3 NM

CATEGORY	A	B	C	D
LPV DA	915-¾ 200 (200-¾)			
LNAV/VNAV DA	1056-¾ 341 (400-¾)			
LNAV MDA	1100-¾ 385 (400-¾)			1100-1 385 (400-1)
CIRCLING	1180-1 454 (500-1)	1220-1 494 (500-1)	1380-1¾ 654 (700-1¾)	1480-2½ 754 (800-2½)