

LOC/DME I-CBE	APP CRS	Rwy Idg	5047
110.5	228°	TDZE	775
Chan 42		Apt Elev	775

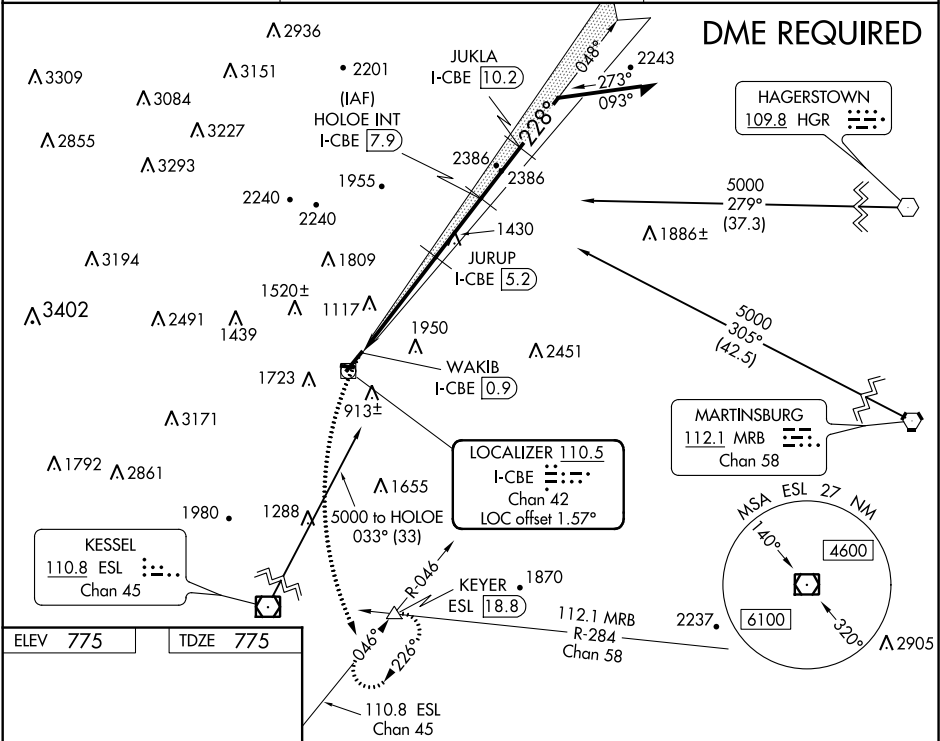
LOC/DME RWY 23

GREATER CUMBERLAND RGNL (CBE)

When local altimeter setting not received, use Winchester altimeter setting and increase all MDA 100 feet, increase S-23 Cat B visibility ¼ mile, Cats C and D ½ mile. Night landing: Rwy 5, 11, 29 NA. Circling NA northwest of Rwy 5/23. Helicopter visibility reduction below ¾ SM NA.

MISSED APPROACH: Climbing left turn to 5000 on heading 175° and on ESL VOR/DME R-046 to KEYER/ESL 18.8 DME and hold, continue climb-in-hold to 5000.

AWOS-3	JOHNSTOWN APP CON ★	UNICOM
128.625	121.2 299.2	122.8 (CTAF) 0



ELEV 775

TDZE 775

REIL Rwy 23 0

LIRL Rwy 11-29 0

HIRL Rwy 5-23 0

5000

hdg 175°

ESL

R-046

KEYER

△

HOLOE INT

I-CBE 7.9

Remain within 10 NM

VGSI and descent angles not coincident

(VGSI Angle 3.59/TCH 29).

JURUP

I-CBE 5.2

WAKIB

I-CBE 0.9

3.48°

TCH 40

JUKLA

I-CBE 10.2

4300

2420

3400

3800

Use I-CBE DME when on the localizer course.

4.3 NM

2.7 NM

2.3 NM

CATEGORY	A	B	C	D
S-23	1680-1¼	905 (1000-1¼)	1680-2½	905 (1000-2½)
CIRCLING	1680-1¼	2140-1½	2260-3	2360-3
	905 (1000-1¼)	1365 (1400-1½)	1485 (1500-3)	1585 (1600-3)