

|           |         |          |      |
|-----------|---------|----------|------|
| LOC I-ORB | APP CRS | Rwy ldg  | 4074 |
| 109.15    | 145°    | TDZE     | 11   |
|           |         | Apt Elev | 11   |

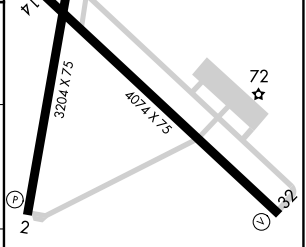
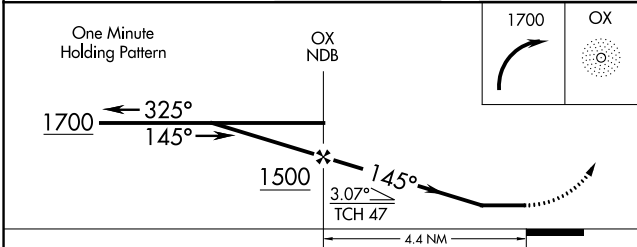
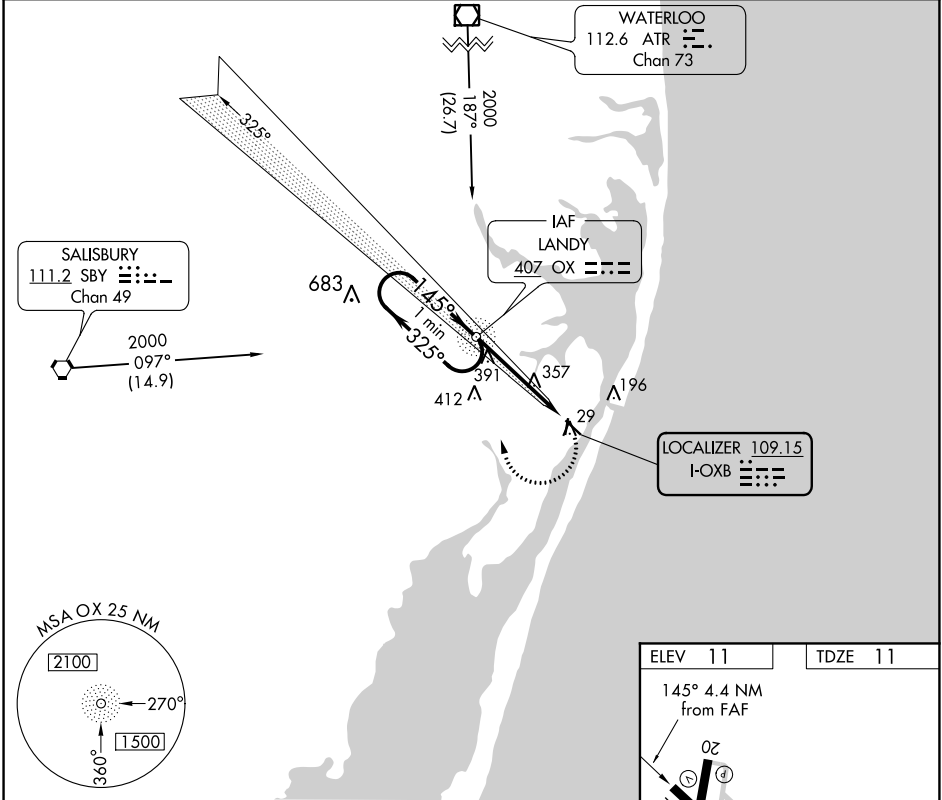
LOC RWY 14  
OCEAN CITY MUNI (OXB)

ADF required for procedure entry. ADF required.

NA Straight-in Rwy 14 NA at night. Circling Rwy 2, 14, 20 NA at night. When local altimeter setting not received, use Salisbury altimeter setting and increase all MDAs 60 feet and visibility S-14 Cat B and Circling Cat B/C/D ¼ SM. Rwy 14 helicopter visibility reduction below 1 SM NA.

MISSED APPROACH: Climbing right turn to 1700 direct OX NDB and hold.

|         |                    |          |                 |
|---------|--------------------|----------|-----------------|
| ASOS    | PATUXENT APP CON * | CLNC DEL | UNICOM          |
| 119.025 | 127.95 314.0       | 121.75   | 123.05 (CTAF) 0 |



| CATEGORY | A                 | B                 | C                     | D                     |
|----------|-------------------|-------------------|-----------------------|-----------------------|
| S-14     | 700-1 689 (700-1) | 700-2 689 (700-2) | 700-2 ¼ 689 (700-2 ¼) | 700-2 ¼ 689 (700-2 ¼) |
| CIRCLING | 700-1 689 (700-1) | 700-2 689 (700-2) | 700-2 ¼ 709 (800-2 ¼) | 700-2 ¼ 709 (800-2 ¼) |

|                         |                          |
|-------------------------|--------------------------|
| REIL Rwy 2 and 20       | 0                        |
| MIRL Rwy 2-20 and 14-32 | 0                        |
| FAF to MAP              | 4.4 NM                   |
| Knots                   | 60 90 120 150 180        |
| Min:Sec                 | 4:24 2:56 2:12 1:46 1:28 |

NE-3, 31 DEC 2020 to 28 JAN 2021

NE-3, 31 DEC 2020 to 28 JAN 2021