

APP CRS
145°

Rwy Idg
TDZE
11
Apt Elev
11

RNAV (GPS) RWY 14

OCEAN CITY MUNI (OXB)

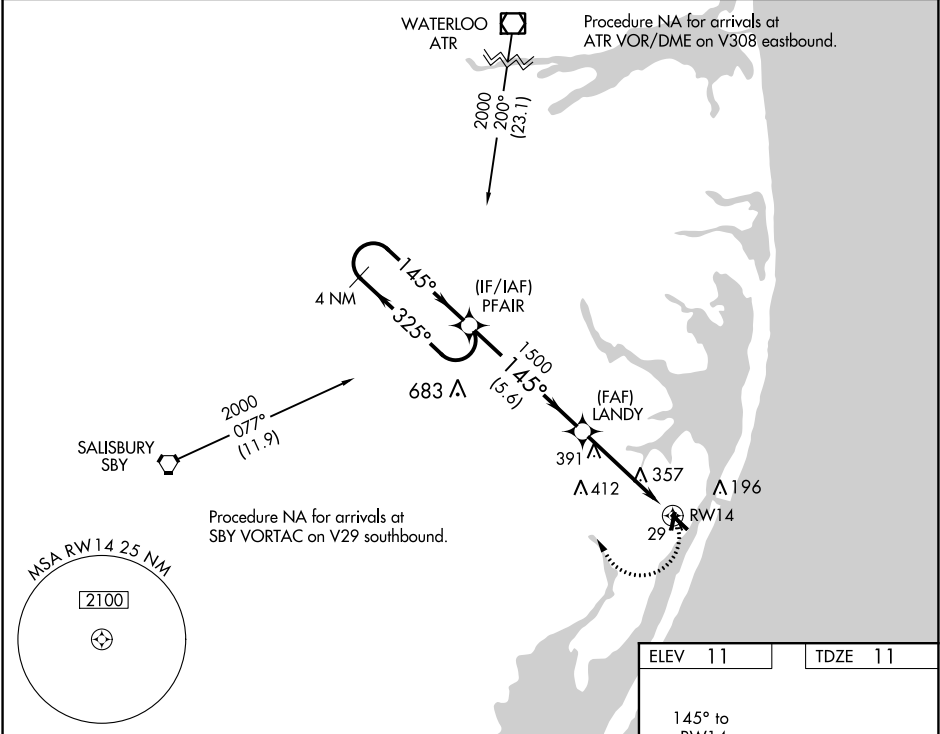
RNP APCH.

▼
NA

Straight-in Rwy 14 NA at night, Circling Rwy 2, 14, 20 NA at night. When local altimeter setting not received, use Salisbury altimeter setting and increase all MDAs 60 feet and visibility LNAV Cat B and Circling Cat B/C/D ¼ SM. Rwy 14 helicopter visibility reduction below 1 SM NA.

MISSED APPROACH:
Climbing right turn to 2000 on 325°course to PFAIR and hold.

ASOS 119.025	PATUXENT APP CON ★ 127.95 314.0	CLNC DEL 121.75	UNICOM 123.05 (CTAF) 0
-----------------	------------------------------------	--------------------	---------------------------



4 NM Holding Pattern

VGSI and descent angles not coincident (VGSI Angle 3.00/TCH 47).

2000

325°

145°

145°

1500

3.09°

TCH 34

5.6 NM

4.4 NM

RW14

2000

PFAIR

LANDY

CATEGORY	A	B	C	D
LPV DA			NA	
LNAV/VNAV DA			NA	
LNAV MDA	700-1 689 (700-1)	700-2 689 (700-2)	700-2 689 (700-2)	700-2 689 (700-2)
CIRCLING	700-1 689 (700-1)	700-2 689 (700-2)	720-2 709 (800-2 1/4)	720-2 709 (800-2 1/4)

ELEV 11

TDZE 11

145° to RW14

0Z

4L

3204 X 75

4074 X 75

72

32

2

REIL Rwy 2 and 20 0
MIRL Rwy 2-20 and 14-32 0