

APP CRS
032°

Rwy Idg
TDZE
Apt Elev
11
11

3204

RNAV (GPS) RWY 2

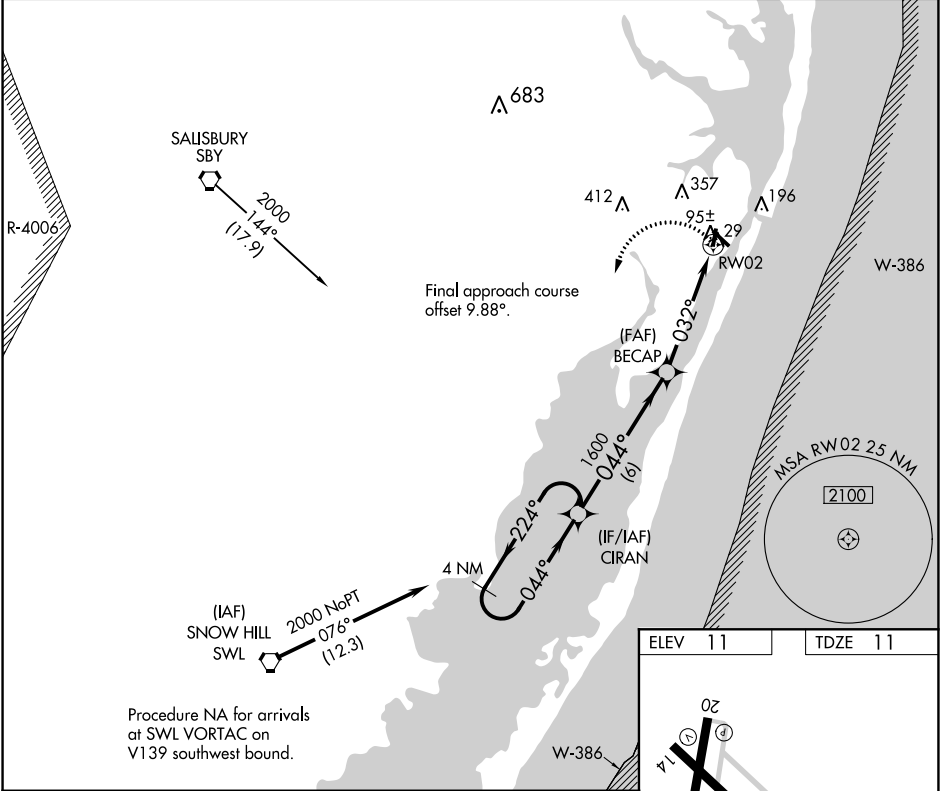
OCEAN CITY MUNI (OXB)

RNP APCH.

When local altimeter setting not received, use Salisbury altimeter setting and increase all MDAs 60 feet and visibility LNAV Cat C 1/8 SM and Circling Cat C 1/4 SM. Straight-in Rwy 2 NA at night, Circling Rwy 2, 14, 20 NA at night. Rwy 2 helicopter visibility reduction below 1 SM NA.

MISSED APPROACH:
Climbing left turn to 2000 direct CIRAN and hold.

ASOS 119.025	PATUXENT APP CON ★ 127.95 314.0	CLNC DEL 121.75	UNICOM 123.05 (CTAF) 0
------------------------	---	---------------------------	----------------------------------



4 NM Holding Pattern		CIRAN	
2000		2000	
← 224°		044° →	
044°		044°	
1600		3.00° TCH 40	
6 NM		4.9 NM	
CATEGORY	A	B	C
LNAV MDA	420 - 1	409 (500-1)	420 - 1 1/4 409 (500-1 1/4)
CIRCLING	480 - 1	469 (500-1)	660 - 1 3/4 649 (700-1 3/4)

