

TOP ALTITUDE
3000

NOTE: RNAV 1.

NOTE: RADAR required.

NOTE: DME/DME/IRU or GPS required.

NOTE: Turbo-jets only.

NOTE: Takeoff Rwy 35 requires a climb to 1200 on heading 353° before proceeding on the ATC assigned heading for obstacle avoidance.

TAKEOFF MINIMUMS:

Rwys 17, 35: Standard

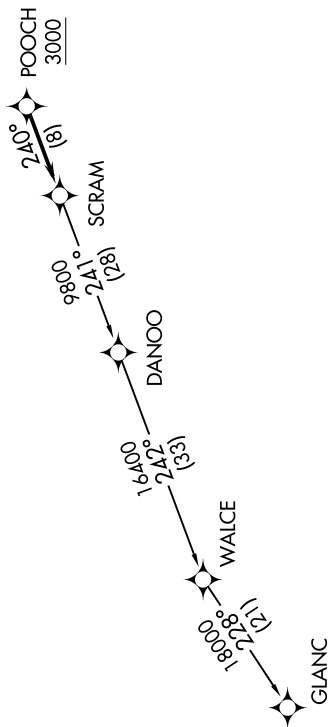
NOTE: Chart not to scale.

DEPARTURE ROUTE DESCRIPTION

Climb on heading assigned by ATC, expect
RADAR vectors to POOCH, then on track 240°
to SCRAM, thence. . . .

... as depicted. Maintain 3000, expect clearance to filed altitude within ten (10) minutes after departure.

GLANC TRANSITION (SCRAM6.GLANC):



NE-3, 31 DEC 2020 to 28 JAN 2021

(SCRAM6.SCRAM) 31DEC20

LEESBURG, VIRGINIA
LEESBURG EXECUTIVE (JYO)