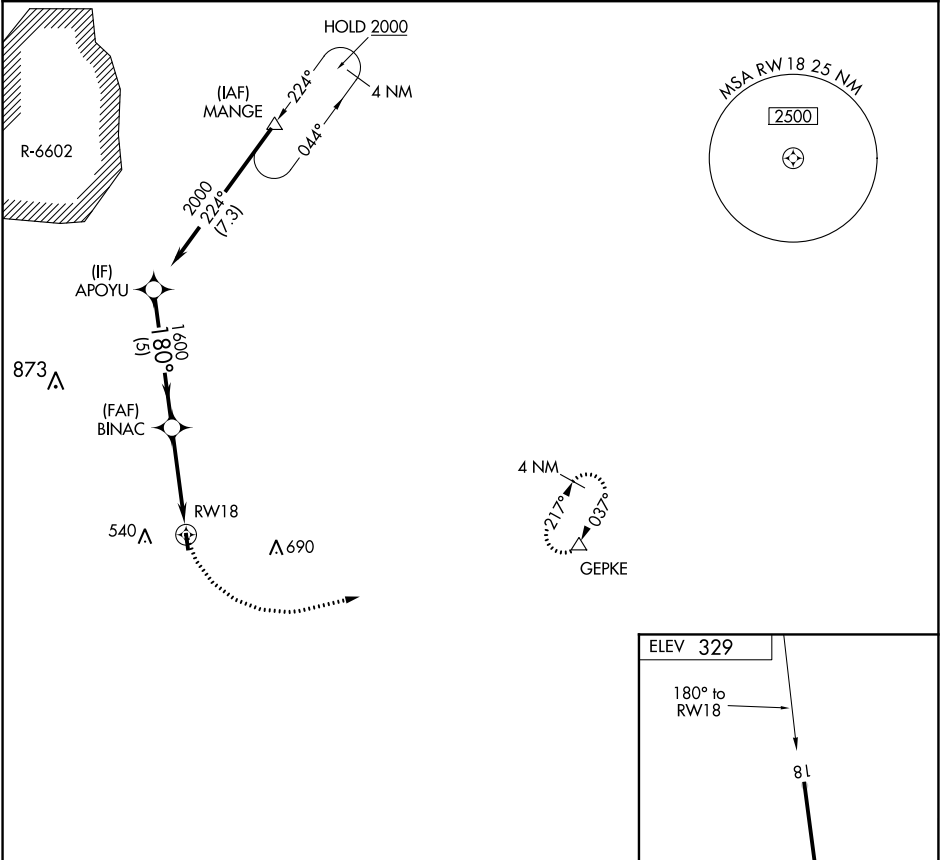


APP CRS	Rwy Idg	N/A
180°	TDZE	N/A
	Apt Elev	329

RNAV (GPS)-A
BRUNSWICK COUNTY AIRPORT (LVL)

RNP APCH.		MISSED APPROACH: Climbing left turn to 4000 direct GEPKE and hold, continue climb-in-hold to 4000.
AWOS-3 119.625		UNICOM 122.8 (CTAF) 0
WASHINGTON APP CON 118.75 377.1		



APOYU		Visual Segment - Obstacles.		4000	GEPKE
2000		BINAC			
180°		1600			
5 NM		3.9 NM			
CATEGORY		A	B	C	D
CIRCLING		1340-3	1011 (1100-3)	NA	

