

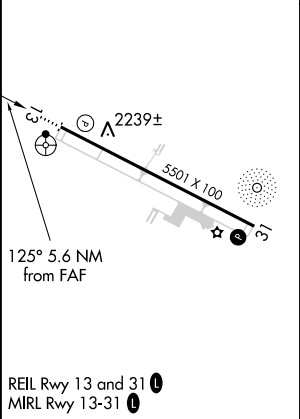
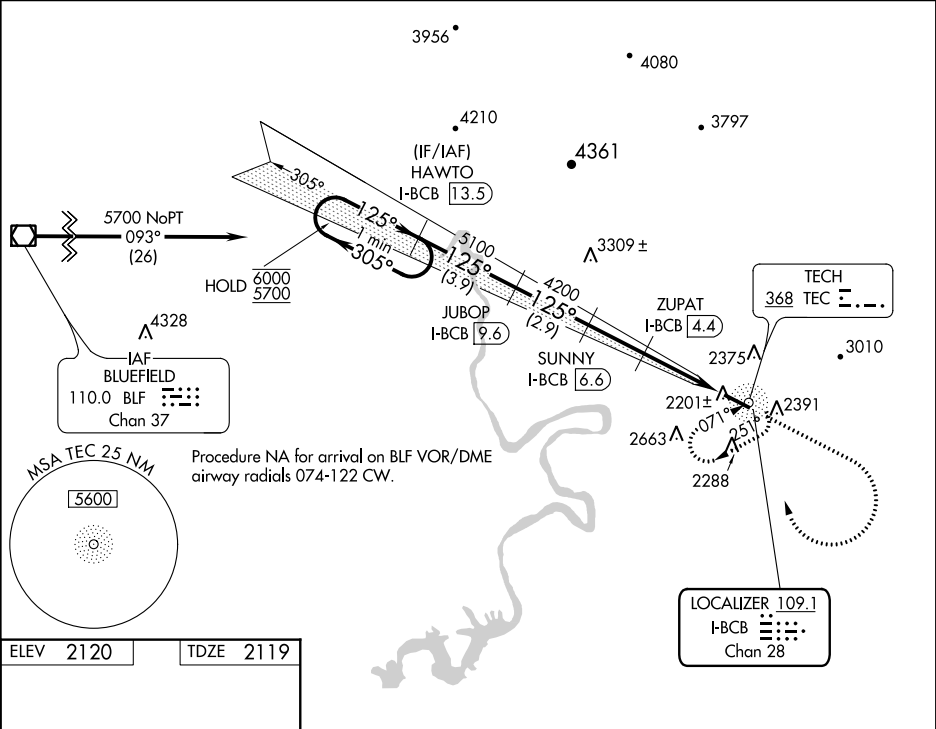
LOC/DME I-BCB	APP CRS	Rwy Idg	5501
109.1	125°	TDZE	2119
Chan 28		Apt Elev	2120

LOC RWY 13

VIRGINIA TECH/MONTGOMERY EXECUTIVE (BCB)

ADF and DME required.		ODALS	MISSED APPROACH: Climb to 3600 then climbing right turn to 5700 direct TEC NDB and hold, continue climb-in-hold to 5700.
	Rwy 13 helicopter visibility reduction below 1 SM NA. Inop table does not apply.		

AWOS-3	ROANOKE APP CON	CLNC DEL	UNICOM
133.325	126.9 339.8	124.85	123.05 (CTAF)



One Minute Holding Pattern		3600	5700	TEC
HAWTO I-BCB 13.5				
JUBOP I-BCB 9.6				
SUNNY I-BCB 6.6				
ZUPAT I-BCB 4.4				
3600 ← 305°				
5700 → 125°				
5100				
4200				
3380				
3.44°				
TCH 55°				
I-BCB 1.9				
I-BCB 1.1				
3.9 NM				
2.9 NM				
2.2 NM				
2.5 NM				
0.8				
CATEGORY	A	B	C	D
S-13	2480-1 361 (400-1)			NA
CIRCLING	2760-1 640 (700-1)	2820-1 700 (700-1)	2980-2½ 860 (900-2½)	NA