

CLTCH THREE DEPARTURE (RNAV)

NOTE: Chart not to scale.

TOP ALTITUDE:
3000

P-56B

P-56A



DEPARTURE ROUTE DESCRIPTION

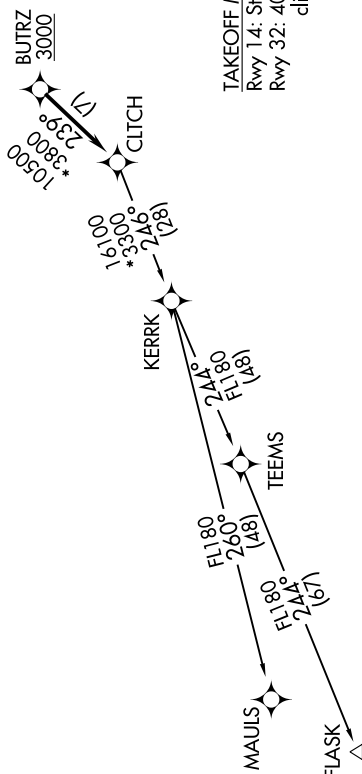
Climb on heading assigned by ATC, expect RADAR vectors to BUTRZ, then on track 239° to CLTCH, thence....

.....on assigned transition, maintain altitude assigned by ATC, expect clearance to filed altitude within ten (10) minutes after departure.

FLASK TRANSITION (CLTCH3.FLASK)
MAULS TRANSITION (CLTCH3.MAULS)

ATIS
128.175
CLNC DEL
351.8
GND CON
121.9 351.8
DAVISON TOWER ★
126.3 (CTAF) 229.4
POTOMAC DEP CON
118.95 257.2

NOTE: RNAV 1.
NOTE: RADAR required.
NOTE: DME/DME/IRU or GPS required.
NOTE: Turbo-jets only.



TAKEOFF MINIMUMS:

Rwy 14: Standard.
Rwy 32: 400-2 or Standard with minimum
climb of 300' per NM to 500.

CLTCH THREE DEPARTURE (RNAV)
(CLTCH3.CLTCH) 31DEC20

FORT BELVOIR, VIRGINIA
DAVISON AAF (DAA)