

FORT BELVOIR, VIRGINIA

RNAV (GPS) RWY 32

WAAS CH 91281 W32A	APCH CRS 323°	Rwy ldg TDZE 68 Arpt Elev 74
--------------------------	------------------	------------------------------------

AL-5504 (USA)

DAVISON AAF (KDAV)

▼ * When ALS inop, increase RVR to 45, vis to 7/8 mile. ** When ALS inop, increase RVR to 60, vis to 1 1/8 miles. *** When ALS inop, increase vis to 1 3/8 miles.	MALS (A4)	MISSED APPROACH: Climb to 600 then climbing left turn to 2000 direct UDCY and hold.
--	---------------------	--

ATIS 128.175	POTOMAC APP CON 118.95 319.1	TOWER * 126.3 (CTAF) 0 229.4	GND CON 121.9 351.8	CLNC DEL 351.8	PAR
------------------------	--	--	-------------------------------	--------------------------	------------

**** When ALS inop, increase CAT
AB RVR to 55, vis to 1 mile;
483 • CAT CD vis to 1 3/8 miles.

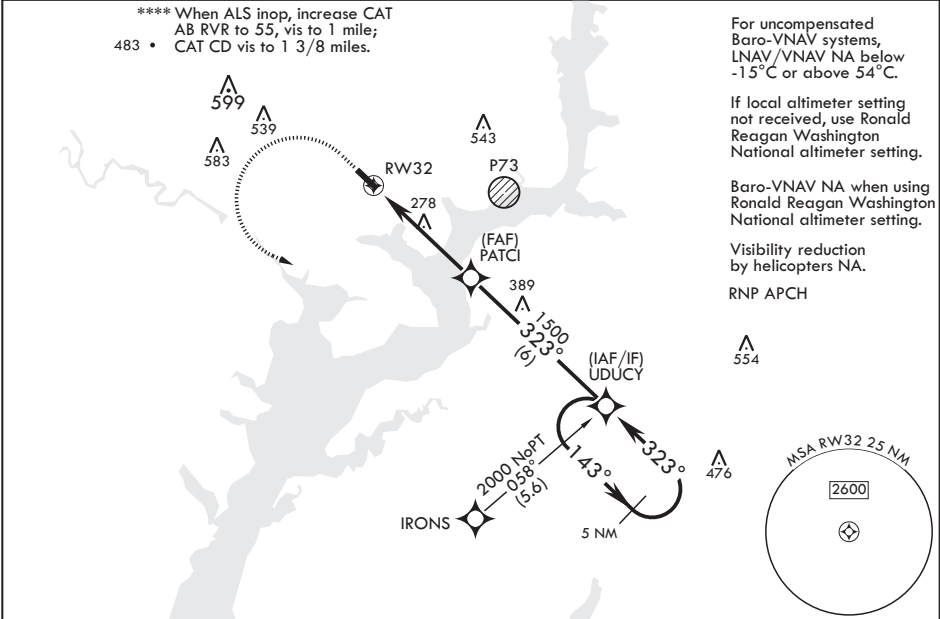
For uncompensated
Baro-VNAV systems,
LNAV/VNAV NA below
-15°C or above 54°C.

If local altimeter setting
not received, use Ronald
Reagan Washington
National altimeter setting.

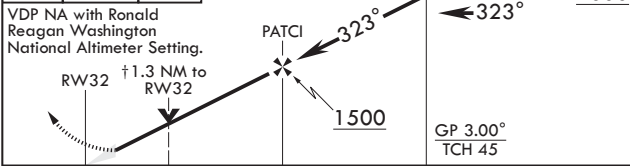
Baro-VNAV NA when using
Ronald Reagan Washington
National altimeter setting.

Visibility reduction
by helicopters NA.

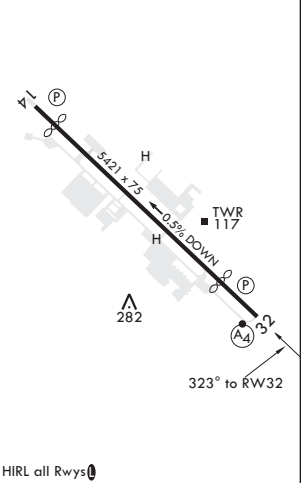
RNP APCH



600 ↑	2000 ↶	UDCY 	† LNAV only	UDCY 143°	2000 ← 323°	ELEV 74 Rwy 14 ldg 4931' Rwy 32 ldg 4519'	TDZE 68
-----------------	------------------	-----------------	-------------	---------------------	-----------------------	--	----------------



CATEGORY	A	B	C	D
LPV DA *	351/40	283	(300-3/4)	
LNAV/VNAV DA **	481/50	413	(500-1)	
LNAV MDA ****	540/40 472 (500-3/4)	540/60 472 (500-1 1/2)		
CIRCLING	700-1 626 (700-1)	740-1 666 (700-1)	800-2 726 (800-2)	1000-3 926 (1000-3)
RONALD REAGAN WASHINGTON NATIONAL ALTIMETER MINIMUMS				
LPV DA *	384/40	316	(400-3/4)	
LNAV/VNAV DA ***	514/55	446	(500-1)	
LNAV MDA ****	580/40 512 (600-3/4)	580-1 1/4 512 (600-1 1/4)		
CIRCLING	720-1 646 (700-1)	780-1 706 (800-1)	820-2 1/4 746 (800-2 1/4)	1040-3 966 (1000-3)



FORT BELVOIR, VIRGINIA

38°43'N - 77°11'W

DAVISON AAF (KDAV)

Amdt 2 10SEP20

RNAV (GPS) RWY 32

NE-3, 31 DEC 2020 to 28 JAN 2021

NE-3, 31 DEC 2020 to 28 JAN 2021