

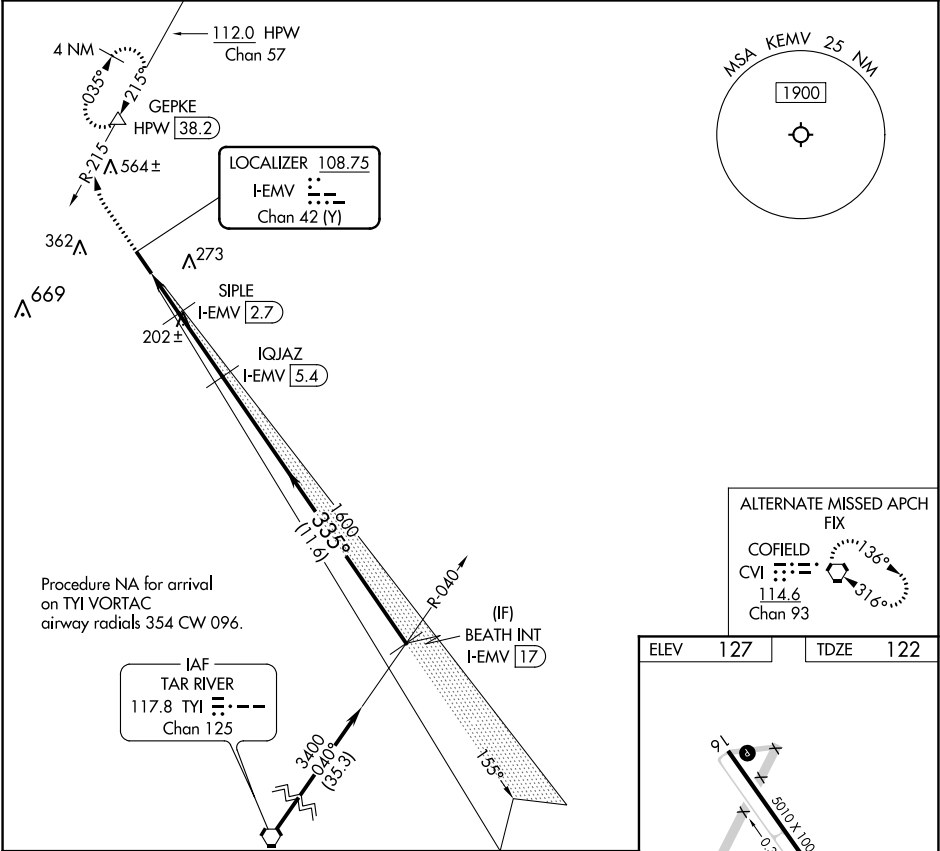
LOC/DME I-EMV 108.75 Chan 42 (Y)	APP CRS 335°	Rwy Idg TDZE 122 Apt Elev 127	5010
--	------------------------	---	-------------

LOC RWY 34

EMPORIA-GREENSVILLE RGNL (EMV)

DME required. ▼ ▲ NA	MISSED APPROACH: Climb to 600 then climbing right turn to 5000 on HPW VORTAC R-215 to GEPKE/HPW 38.2 DME and hold, continue climb-in-hold to 5000.
----------------------------	--

AWOS-3 124.175	WASHINGTON CENTER 132.025 269.4	UNICOM 123.0 (CTAF) 0
--------------------------	---	--



600	5000	GEPKE	SIPLE	IQJAZ	BEATH INT
HPW R-215	HPW R-215	△	I-EMV 2.7	I-EMV 5.4	I-EMV 17
I-EMV 0.9	I-EMV 1.8		≤3.00° TCH 43	335° 3400	
1 NM	0.8 NM	2.7 NM	11.6 NM		
CATEGORY	A	B	C	D	
S-LOC 34	460-1	338 (400-1)	NA		
CIRCLING	580-1	453 (500-1)	680-1½ 553 (600-1½)	NA	

ELEV 127	TDZE 122
REIL Rwy 16 and 34 MIRL Rwy 16-34	
FAF to MAP 4.6 NM	
Knots	60 90 120 150 180
Min:Sec	4:36 3:04 2:18 1:50 1:32

NE-3, 31 DEC 2020 to 28 JAN 2021

NE-3, 31 DEC 2020 to 28 JAN 2021