

WAAS CH 45540 W34A	APP CRS 334°	Rwy Idg TDZE 20 Apt Elev 20	4477
--	------------------------	---	-------------

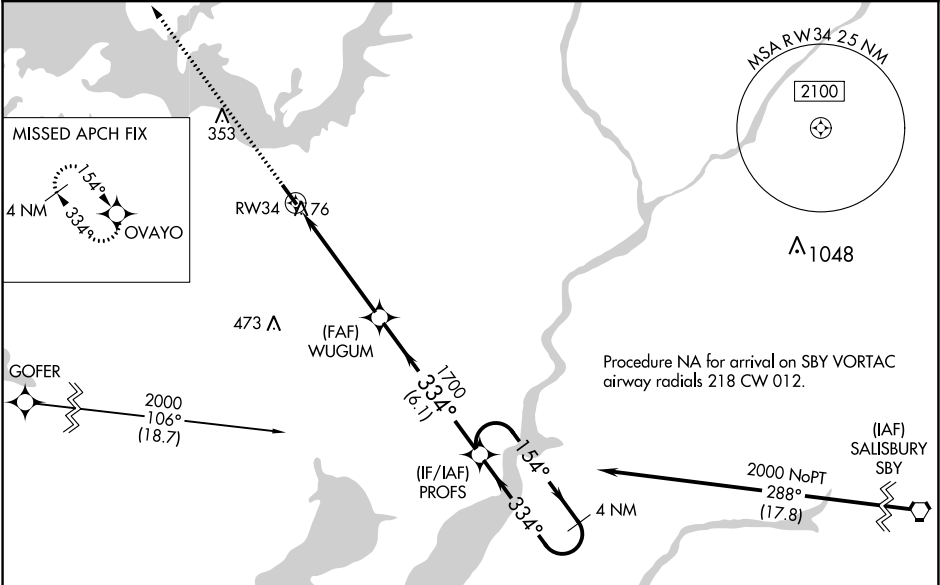
RNAV (GPS) RWY 34

CAMBRIDGE-DORCHESTER RGNL (CDE)

Circling NA at night. For uncompensated Baro-VNAV systems, LNAV/VNAV NA below -15°C (5°F) or above 54°C (130°F).
Rwy 34 helicopter visibility reduction below ¾ SM NA.
DME/DME RNP-0.3 NA.

MISSED APPROACH: Climb to 2000 direct OVAYO and hold.

AWOS-3 120.675	PATUXENT APP CON ★ 121.0 250.3	UNICOM 122.7 (CTAF)	121.9
--------------------------	--	-------------------------------	--------------



ELEV 20		TDZE 20		
2000 ↑	OVAYO ✧	VGSI and RNAV glidepath not coincident (VGSI Angle 3.25/TCH 35).		
* LNAV only.		PROFS 4 NM Holding Pattern		
CATEGORY	A	B	C	D
LPV DA	286-7/8		266 (300-7/8)	
LNAV/ VNAV DA	309-7/8		289 (300-7/8)	
LNAV MDA	480-1 460 (500-1)		480-1 3/8 460 (500-1 3/8)	
CIRCLING	480-1 460 (500-1)		660-1 3/4 780-2 1/2 640 (700-1 3/4) 760 (800-2 1/2)	

MIRL Rwy 16-34
REIL Rws 16 and 34