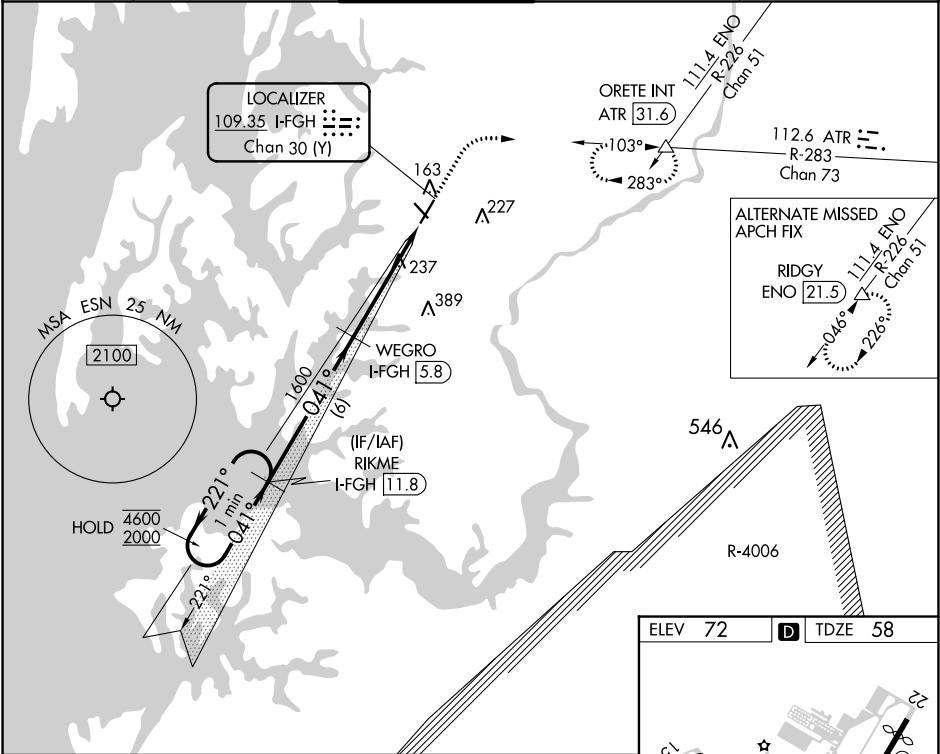


LOC/DME I-FGH 109.35 Chan 30 (Y)	APP CRS 041°	Rwy Idg 4775 TDZE 58 Apt Elev 72	ILS or LOC RWY 4 EASTON/NEWNAM FIELD (ESN)	
--	------------------------	---	---	--

RADAR and DME required for procedure entry. DME required for LOC only.		MISSED APPROACH: Climb to 2000 on heading 041° and on ATR VOR/DME R-283 to ORETE INT/ATR 31.6 DME and hold.
<div><div><div>T</div><div>A</div></div></div> <div>Circling Rwy 15, 33 NA at night. Autopilot coupled approach NA below 660.</div>		

ATIS 124.475	POTOMAC APP CON 133.75 254.35	EASTON TOWER ★ 118.525 (CTAF) ①	GND CON 119.075	CLNC DEL 119.075
------------------------	---	---	---------------------------	----------------------------



One Minute Holding Pattern		RIKME I-FGH 11.8	2000	ATR R-283	ORETE
4600 ← 221°		041° →	hdg 041°		△
2000		041°			
GS 3.00°					
TCH 44					
		WEGRO I-FGH 5.8	*I-FGH 2.5	I-FGH 1	
		1600			
		6 NM	3.4 NM	1.4 NM	
CATEGORY	A	B	C	D	
S-ILS 4		273-¾	215 (300-¾)		
S-LOC 4	540-1	482 (500-1)	540-1¾	482 (500-1¾)	
Ⓢ CIRCLING	540-1 468 (500-1)	640-1 568 (600-1)	640-1½ 568 (600-1½)	740-2 668 (700-2)	

ELEV 72 D TDZE 58

0.5% UP → 4000 X 100

TWR

041° 4.8 NM from FAF

0.7% UP →

HIRL Rwy 4-22 ①

REIL Rws 15, 22 and 33 ①

MIRL Rws 15-33 ①