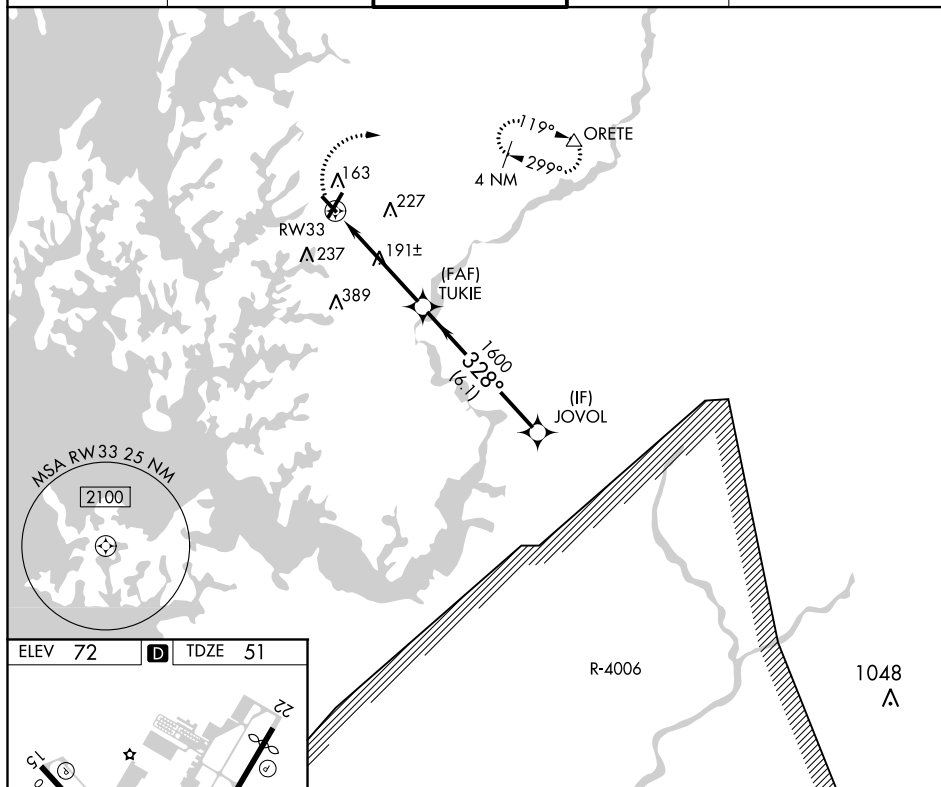




|                        |                             |                                       |
|------------------------|-----------------------------|---------------------------------------|
| APP CRS<br><b>328°</b> | Rwy Idg<br>TDZE<br>Apt Elev | <b>4003</b><br><b>51</b><br><b>72</b> |
|------------------------|-----------------------------|---------------------------------------|


# RNAV (GPS) RWY 33

|  |   |   |                            |
|--|---|---|----------------------------|
| RNP APCH:  |   | MISSED APPROACH:<br>Climbing right turn to 2000<br>direct ORETE and hold. |                            |
| Straight-in Rwy 33 NA at night, Circling Rwy 15, 33 NA at night.<br>Helicopter visibility reduction below 1 SM NA. |   |   |                            |
| ATIS<br><b>124.475</b>   | POTOMAC APP CON<br><b>133.75 254.35</b> | EASTON TOWER ★<br><b>118.525</b> (CTAF) 0                                 | GND CON<br><b>119.075</b>  |
|  |   |   | CLNC DEL<br><b>119.075</b> |



HIRL Rwy 4-22 

REIL Rwys 22, 15 and 33 

MIRL Rwy 15-33 

Visual Segment - Obstacles.

Diagram showing a flight path from 2000 to JOVOL. The path includes a turn at RW33 and a turn at TUKIE. The distance from RW33 to TUKIE is 4.7 NM, and from TUKIE to JOVOL is 6.1 NM. The angle at TUKIE is 328°. The diagram also shows a 2000 obstacle symbol and a 1600 obstacle symbol.