

WAAS CH 86905 W04A	APP CRS 040°	Rwy Idg 4775 TDZE 58 Apt Elev 72
----------------------------------------	------------------------	-------------------------------------------------------------

RNAV (GPS) RWY 4

EASTON/NEWMAM FIELD (ESN)

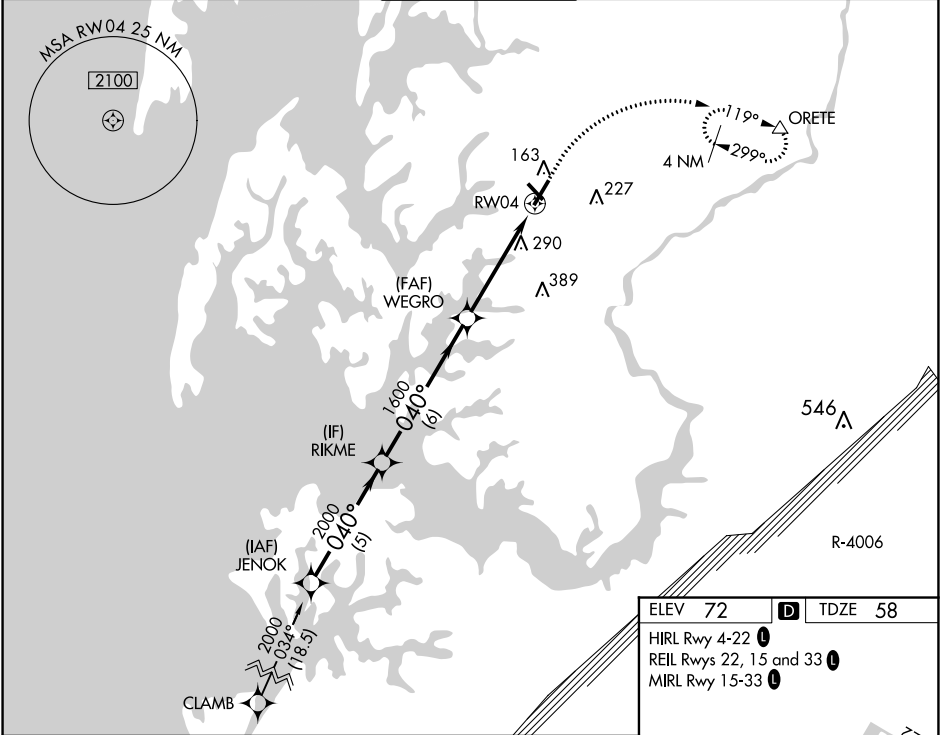
⚠

⚠

DME/DME RNP-0.3 NA. When local altimeter setting not received, use Cambridge altimeter setting; increase LPV DA to 303 feet, LNAV/VNAV DA to 391 feet and all MDA 60 feet; increase LPV and LNAV/VNAV all Cats visibility and LNAV Cat C/D visibility ½ SM and increase Circling Cat C/D visibility ¼ SM. VDP and Baro-VNAV NA when using Cambridge altimeter setting. Circling Rwy 15, 33 NA at night. For uncompensated Baro-VNAV systems, LNAV/VNAV NA below -15°C (5°F) or above 54°C (130°F).

MISSED APPROACH:
Climb to 700 then climbing right turn to 2000 direct ORETE and hold.

ATIS 124.475	POTOMAC APP CON 133.75 254.35	EASTON TOWER ★ 118.525 (CTAF) 0	GND CON 119.075	CLNC DEL 119.075
------------------------	-----------------------------------------	-------------------------------------------	---------------------------	----------------------------



JENOK		RIKME		WEGRO		ORETE	
2000		2000		1600		700 2000	
040°		040°		1600		*1.6 NM to RW04 *LNAV only	
GP 3.00°		TCH 44		1600		RW04	
5 NM		6 NM		3.1 NM		1.6	
CATEGORY	A		B		C		D
LPV DA	258-¾		200 (200-¾)				
LNAV/VNAV DA	346-1		288 (300-1)				
LNAV MDA	600-1 542 (600-1)		600-1½ 542 (600-1½)				
CIRCLING	600-1		640-1		640-1½		740-2
	528 (600-1)		568 (600-1)		568 (600-1½)		668 (700-2)