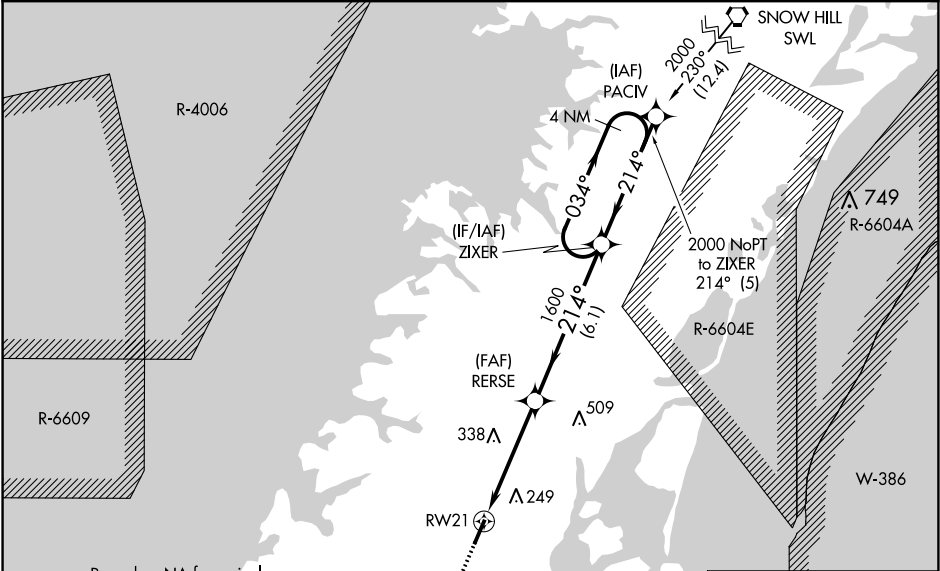


APP CRS	Rwy Idg	5000
214°	TDZE	48
	Apt Elev	48

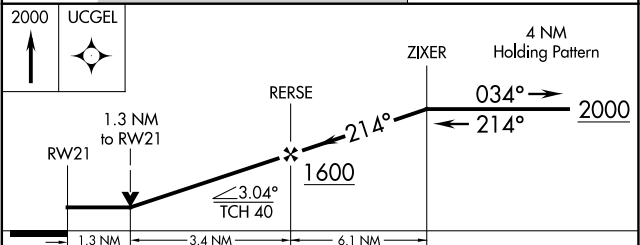
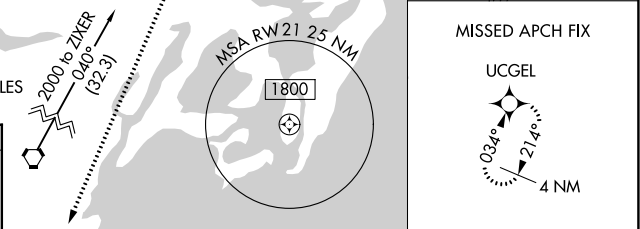
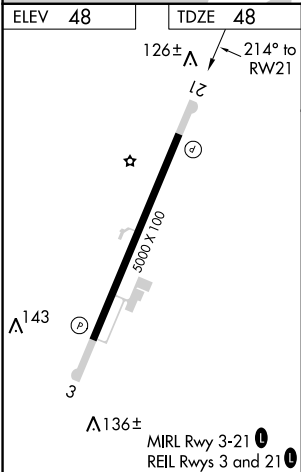
RNAV (GPS) RWY 21
ACCOMACK COUNTY (MFV)

RNP APCH.	MISSED APPROACH: Climb to 2000 direct UCGEL and hold.
Rwy 21 helicopter visibility reduction below ¾ SM NA.	

AWOS-3 118.175	PATUXENT APP CON* 127.95 314.0	UNICOM 122.8 (CTAF) 0
-------------------	-----------------------------------	--------------------------



ELEV 48	TDZE 48
---------	---------



CATEGORY	A	B	C	D
LNAV MDA	500-1	452 (500-1)	500-1 3/8	452 (500-1 3/8)
CIRCLING	500-1 452 (500-1)	560-1 512 (600-1)	700-1 3/4 652 (700-1 3/4)	700-2 652 (700-2)

NE-3, 31 DEC 2020 to 28 JAN 2021

NE-3, 31 DEC 2020 to 28 JAN 2021