

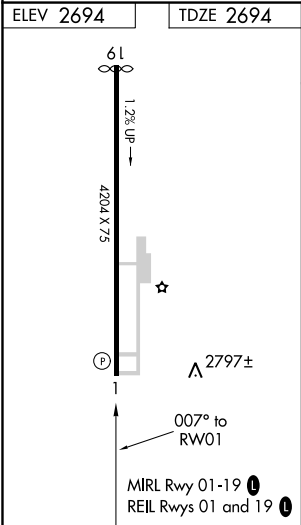
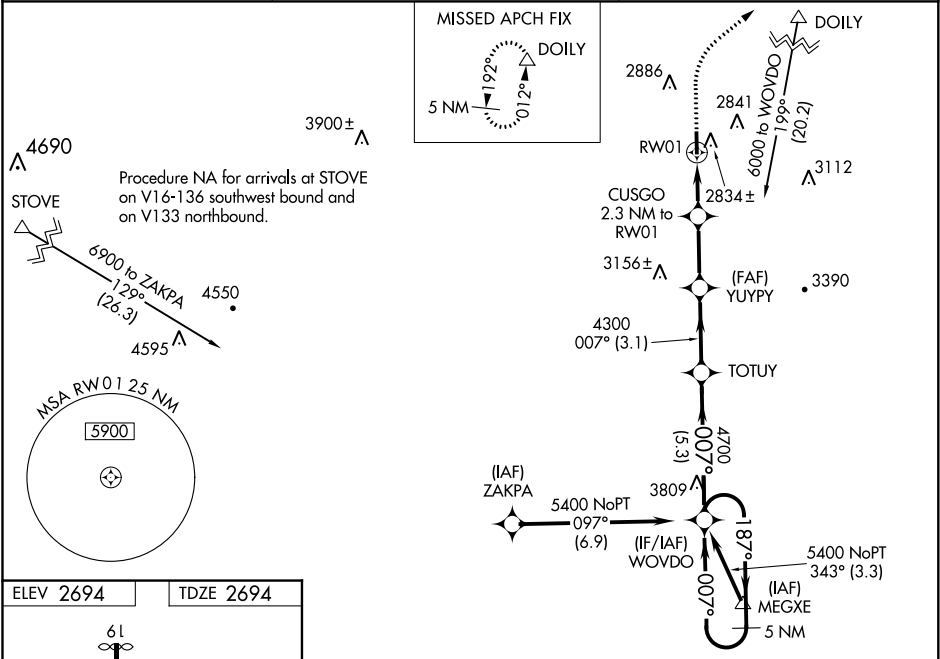
WAAS CH 69527 W01A	APP CRS 007°	Rwy Idg TDZE Apt Elev	4204 2694 2694
--	------------------------	-----------------------------	---

RNAV (GPS) RWY 1
TWIN COUNTY (HLX)

⚠ Baro-VNAV NA when using Dublin altimeter setting. For uncompensated Baro-VNAV systems, LNAV/VNAV NA below -20°C (-4°F) or above 54°C (130°F). DME/DME RNP-0.3 NA. Visibility reduction by helicopters NA. VDP NA with Dublin altimeter setting. When local altimeter setting not received, use Dublin altimeter setting and increase all DA 137 feet and all MDA 140 feet, increase LPV all Cats visibility, LNAV/VNAV all Cats visibility and LNAV Cats C/D visibility ½ mile, and increase Circling Cats C/D visibility ¼ mile.

MISSED APPROACH: Climb to 3200 then climbing right turn to 5100 direct DOILY and hold, continue climb-in-hold to 5100.

AWOS-3 118.375	ROANOKE APP CON 126.0 339.8	UNICOM 122.8 (CTAF) 0
--------------------------	---------------------------------------	---------------------------------



3200	5100	DOILY	VGSI and RNAV glidepath not coincident (VGSI Angle 3.00/TCH 21).	5 NM Holding Pattern
*LNAV only.	CUSGO 2.3 NM to RW01	YUYPY 4300	TOTUY 4700	WOYDO 5400
*1.2 NM to RW01	*3480	4300	007°	187°
1.2 NM	1.1 NM	2.6 NM	3.1 NM	5.3 NM
CATEGORY	A	B	C	D
LPV DA	2965-1	271 (300-1)		
LNAV/VNAV DA	3016-1	322 (400-1)		
LNAV MDA	3100-1 406 (500-1)	3100-1½ 406 (500-1½)		
CIRCLING	3200-1 506 (600-1)	3200-1½ 506 (600-1½)	3260-2 566 (600-2)	

NE-3, 31 DEC 2020 to 28 JAN 2021

NE-3, 31 DEC 2020 to 28 JAN 2021