

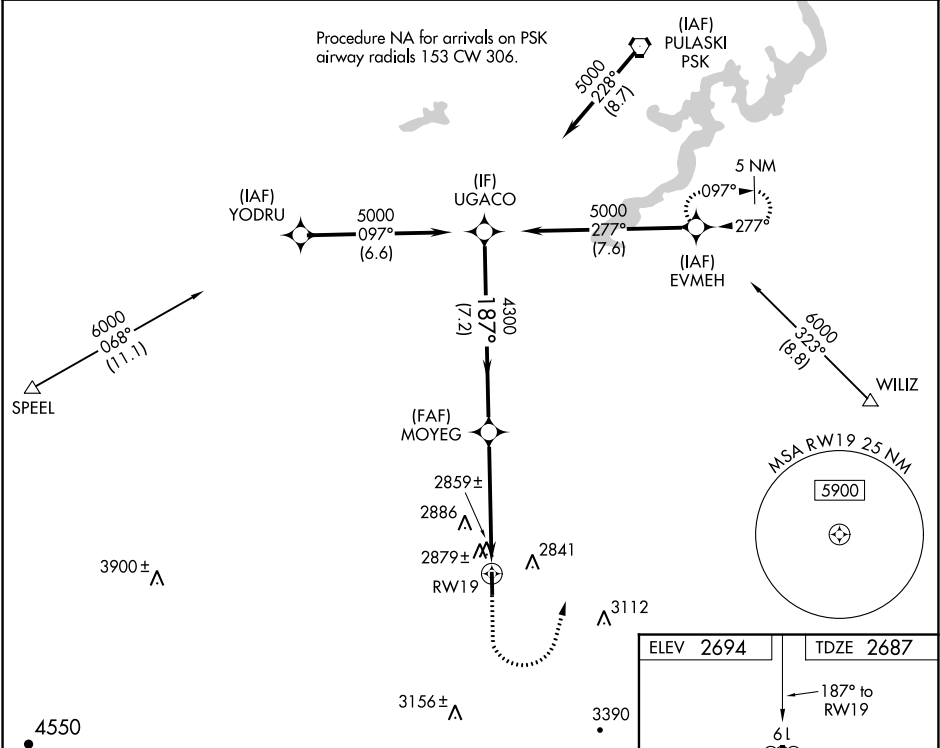
WAAS CH <b>58027</b> <b>W19A</b>	APP CRS <b>187°</b>	Rwy Idg TDZE <b>2687</b> Apt Elev <b>2694</b>	<b>4154</b> <b>2687</b> <b>2694</b>
--	------------------------	---	---

RNAV (GPS) RWY 19  
TWIN COUNTY (HLX)

**⚠** DME/DME RNP-0.3 NA. Visibility reduction by helicopters NA. VDP NA with Dublin altimeter setting. When local altimeter setting not received, use Dublin altimeter setting and increase all MDA 140 feet, increase LP Cats C/D visibility and LNAV Cats C/D visibility 3/8 mile, increase Circling Cats C/D visibility 1/4 mile.

**MISSED APPROACH:** Climb to 3200 then climbing left turn to 5000 direct EVMEH and hold.

AWOS-3 <b>118.375</b>	ROANOKE APP CON <b>126.0 339.8</b>	UNICOM <b>122.8 (CTAF) 0</b>
--------------------------	---------------------------------------	---------------------------------



UGACO				
5000				
187°				
MOYEG				
4300				
3.00°				
TCH 40				
RW19				
1.4				
*1.4 NM to RW19				
*LNAV only.				
3200 5000 EVMEH				
CATEGORY				
A B C D				
LP MDA				
3120-1 433 (500-1) 3120-1 3/8 433 (500-1 3/8)				
LNAV MDA				
3140-1 453 (500-1) 3140-1 3/8 453 (500-1 3/8)				
CIRCLING				
3200-1 506 (600-1) 3200-1 1/2 506 (600-1 1/2) 3260-2 566 (600-2)				

