

WAAS

CH **86706**

**W23A**

APP CRS

**231°**

Rwy Idg

**5002**

TDZE

**191**

Apt Elev

**193**

**RNAV (GPS) RWY 23**

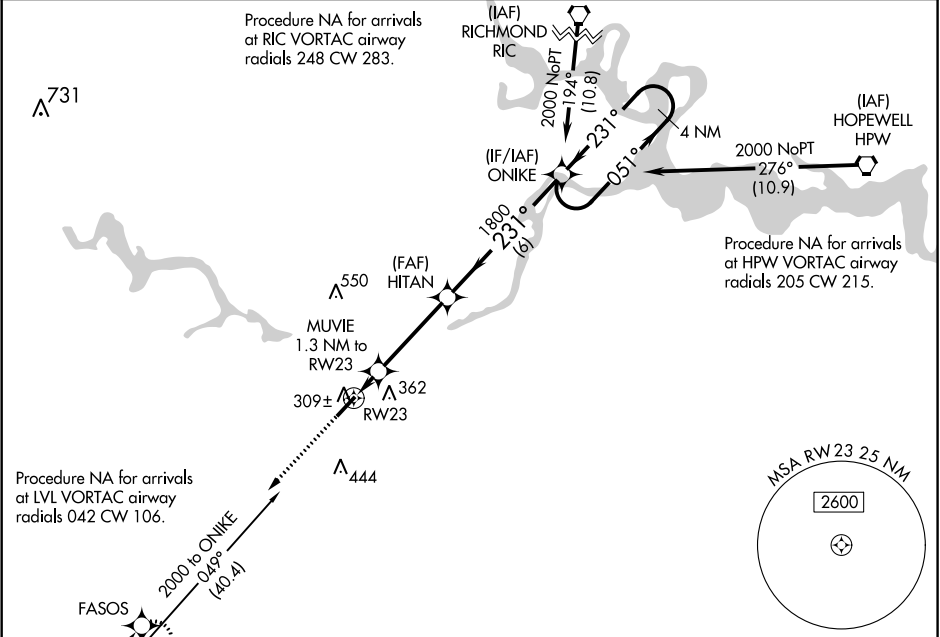
DINWIDDIE COUNTY (P'TB)

**⚠** Baro-VNAV NA when using Richmond Executive-Chesterfield County altimeter setting. For uncompensated Baro-VNAV systems, LNAV/VNAV NA below -15°C (5°F) or above 54°C (130°F). DME/DME RNP-0.3 NA. When local altimeter setting not received, use Richmond Executive-Chesterfield County altimeter setting: increase LPV DA to 478 feet and LNAV/VNAV DA to 517 feet and all MDA 40 feet; increase LNAV/VNAV all Cats visibility and LNAV Cat C visibility 1/8 mile, and increase Circling Cat C visibility 1/4 mile.

MISSED APPROACH:

Climb to 2000 direct FASOS and hold.

AWOS-3 <b>133.325</b>	POTOMAC APP CON <b>126.75 307.2</b>	GCO <b>135.075</b>	UNICOM <b>122.7 (CTAF) 0</b>
--------------------------	--	-----------------------	---------------------------------



ELEV **193**

TDZE **191**

CATEGORY	A	B	C	D
LPV DA	441-1	250 (300-1)		NA
LNAV/VNAV DA	480-1	289 (300-1)		NA
LNAV MDA	560-1	369 (400-1)		NA
CIRCLING	680-1	487 (500-1)	760-1½ 567 (600-1½)	NA

MIRL Rwy 5-23 0

REIL Rwy 5 and 23 0