

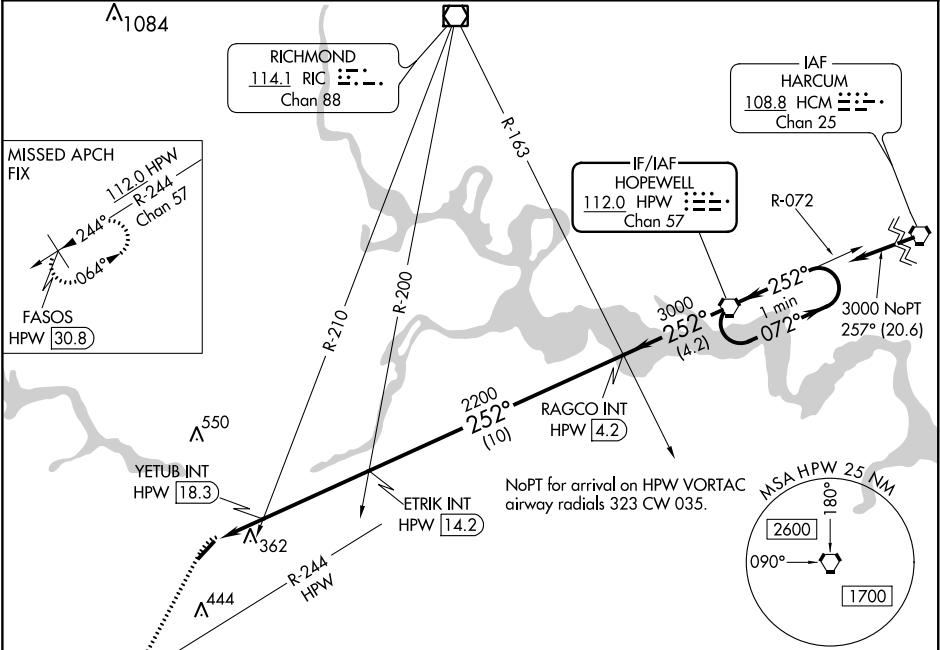
VORTAC HPW	APP CRS	Rwy Idg	5002
112.0	252°	TDZE	191
Chan 57		Apt Elev	193

VOR RWY 23
DINWIDDIE COUNTY (PTB)

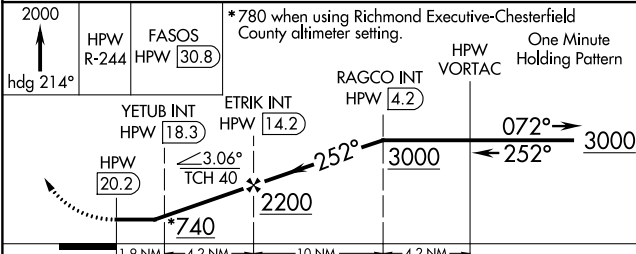
⚠ When local altimeter setting not received, use Richmond Executive-Chesterfield County altimeter setting and increase all MDA 40 feet; increase S-23 Cat C and Circling Cat C visibility 1/8 mile and YETUB fix minimums S-23 Cat C visibility 1/8 mile and Circling Cat C visibility 1/4 mile. DME required.

MISSED APPROACH: Climb to 2000 on heading 214° and HPW R-244 to FASOS/HPW 30.8 DME and hold.

AWOS-3 133.325	POTOMAC APP CON 126.75 307.2	GCO 135.075	UNICOM 122.7 (CTAF) 0
-------------------	---------------------------------	----------------	--------------------------



ELEV 193	TDZE 191
----------	----------



CATEGORY	A	B	C	D
S-23	740-1 549 (600-1)	740-1 549 (600-1)	740-1 549 (600-1)	NA
CIRCLING	740-1 547 (600-1)	740-1 547 (600-1)	740-1 547 (600-1)	NA
YETUB FIX MINIMUMS (DUAL VOR RECEIVERS OR DME REQUIRED)				
S-23	620-1 429 (500-1)	620-1 429 (500-1)	620-1 429 (500-1)	NA
CIRCLING	680-1 487 (500-1)	680-1 487 (500-1)	680-1 487 (500-1)	NA

MIRL Rwy 5-23

REIL Rwy 5 and 23

FAF to MAP 6.1 NM

Knots	60	90	120	150	180
Min:Sec	6:06	4:04	3:03	2:26	2:02

252° 6.1 NM from FAF

NE-3, 31 DEC 2020 to 28 JAN 2021

NE-3, 31 DEC 2020 to 28 JAN 2021