

LOC/DME I-VJI	APP CRS	Rwy Idg	4471
108.3	241°	TDZE	2087
Chan 20		Apt Elev	2087

LOC RWY 24

VIRGINIA HIGHLANDS (VJI)

▼

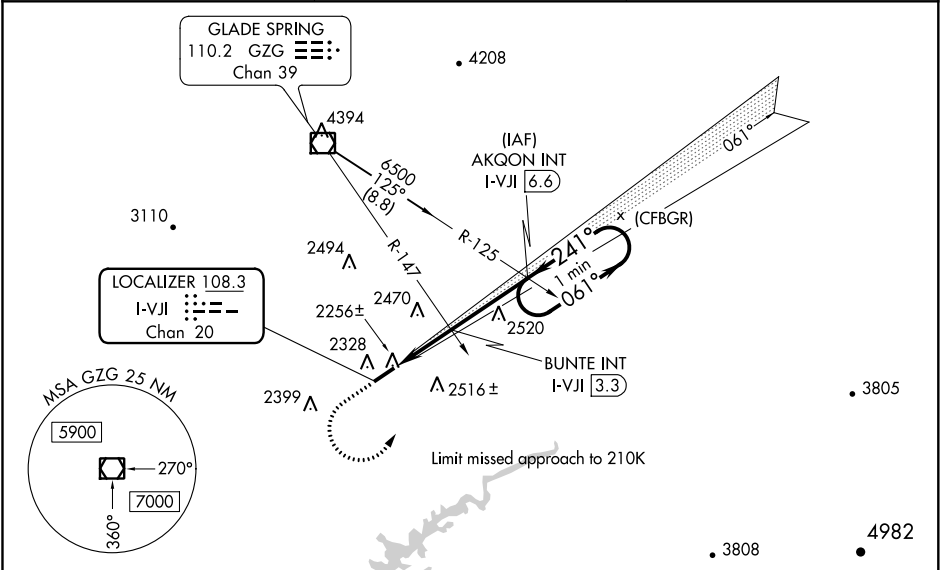
▲

Inop table does not apply. GPS required. Cat D Straight-in minima NA when using Tri-Cities altimeter setting. When local altimeter setting not received; use Tri-Cities altimeter setting and increase all MDA 140 feet; and increase S-24 Cat A and B and Circling Cat B visibility ¼ mile, and S-24 Cat C and Circling Cat C visibility ½ mile. Increase BUNTE fix minimums S-24 Cat C visibility ¾ mile, Circling Cats A and B visibility ¼ mile, and Circling Cat C visibility ½ mile. Helicopter visibility reduction below 1 SM NA.

ODALS

MISSED APPROACH: Climb to 3200 then climbing left turn to 4300 direct AKQON INT and hold.

AWOS-3 128.125	TRI-CITY APP CON ★ 125.25 349.0	UNICOM 122.8(CTAF) 0
-------------------	------------------------------------	-------------------------



ELEV 2087 TDZE 2087

241° 5.8 NM from FAF

MIRL Rwy 6-24 0

REIL Rwy 24 0

FAF to MAP 5.8 NM

Knots	60	90	120	150	180
Min:Sec	5:48	3:52	2:54	2:19	1:56

	3200	4300	AKQON INT	AKQON INT I-VJI 6.6	One Minute Holding Pattern
	VGSi and descent angles not coincident. (VGSi Angle 4.00/TCH 32).				
	BUNTE INT I-VJI 3.3				
	I-VJI 0.8				
	2940*				
	≤3.02° TCH 45				
	2.5 NM				3.3 NM
CATEGORY	A	B	C	D	
S-24	2940-1 853 (900-1)	2940-1¼ 853 (900-1¼)	2940-2½ 853 (900-2½)	853 (900-2½)	
CIRCLING	2940-1¼ 853 (900-1¼)	2940-2½ 853 (900-2½)	3080-3 993 (1000-3)		
BUNTE FIX MINIMUMS					
S-24	2520-1	433 (500-1)	2520-1¼	433 (500-1¼)	
CIRCLING	2860-1	773 (800-1)	2900-2½ 813 (900-2½)	3080-3 993 (1000-3)	