

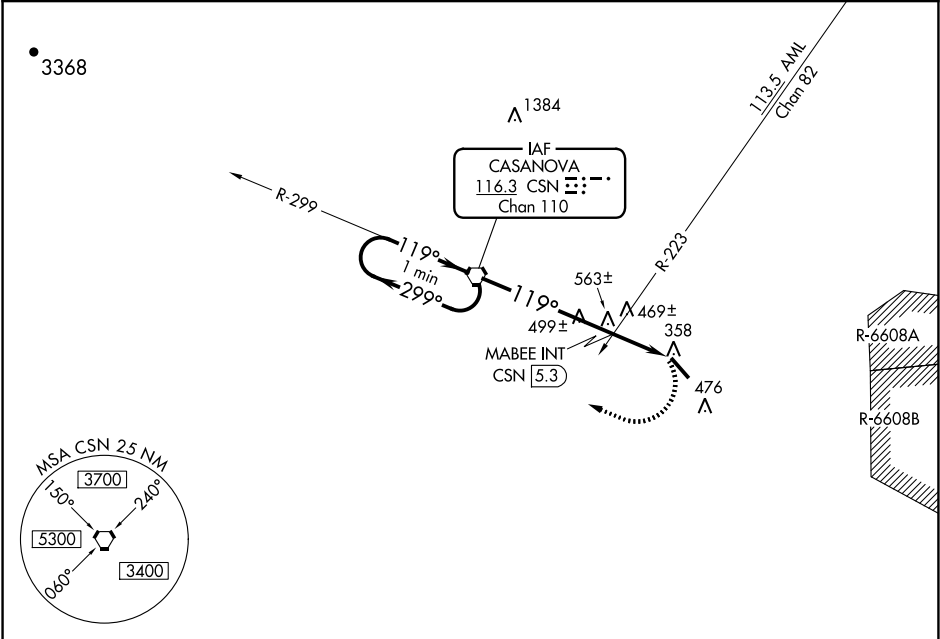
| | | | |
|------------|---------|----------|------|
| VORTAC CSN | APP CRS | Rwy Idg | 5000 |
| 116.3 | 119° | TDZE | 327 |
| Chan 110 | | Apt Elev | 336 |

VOR RWY 15
WARRENTON-FAUQUIER (HWY)

⚠ When local altimeter setting not received, use Culpeper altimeter setting and increase all MDA 40 feet; increase S-15 Cats C/D and Circling Cats C/D visibility ½ mile; increase MABEE fix minimums S-15 Cats C/D and Circling Cat C visibility ¼ mile. Helicopter visibility reduction below ¾ SM NA.

MISSED APPROACH: Climbing right turn to 2800 direct to CSN VORTAC and hold.

| | | | |
|-------------------|-----------------------|------------------------------------|---------------------------------|
| AWOS-3 120.350 | CJR AWOS-3 119.325 | POTOMAC APP CON 128.525 306.925 | UNICOM 122.7 (CTAF) 0 |
|-------------------|-----------------------|------------------------------------|---------------------------------|



One Minute Holding Pattern

2800 ← 299° / 119° → 2800

*1100 when using Culpeper altimeter setting.

CSN VORTAC

MABEE INT CSN 5.3

3.01° TCH 52

*1060

5.3 NM / 2.3 NM

2800 CSN

ELEV 336 TDZE 327

119° 7.6 NM from FAF

370 ±

0.5% UP → 3000 x 100

33

| CATEGORY | A | B | C | D |
|---|-----------------------|-------------------------|------------------------|-------------------------|
| S-15 | 1060-1 733 (800-1) | 1060-1¼ 733 (800-1¼) | 1060-2 733 (800-2) | 1060-2¼ 733 (800-2¼) |
| CIRCLING | 1060-1 | 724 (800-1) | 1060-2 724 (800-2) | 1060-2¼ 724 (800-2¼) |
| MABEE FIX MINIMUMS (DUAL VOR RECEIVERS OR DME REQUIRED) | | | | |
| S-15 | 820-1 | 493 (500-1) | 820-1⅜ | 493 (500-1⅜) |
| CIRCLING | 820-1 | 484 (500-1) | 820-1½ 484 (500-1½) | 900-2 564 (600-2) |

REIL Rws 15 and 33
HIRL Rwy 15-33 **0**

FAF to MAP 7.6 NM

| | | | | | |
|---------|------|------|------|------|------|
| Knots | 60 | 90 | 120 | 150 | 180 |
| Min:Sec | 7:36 | 5:04 | 3:48 | 3:02 | 2:32 |

NE-3, 31 DEC 2020 to 28 JAN 2021

NE-3, 31 DEC 2020 to 28 JAN 2021