

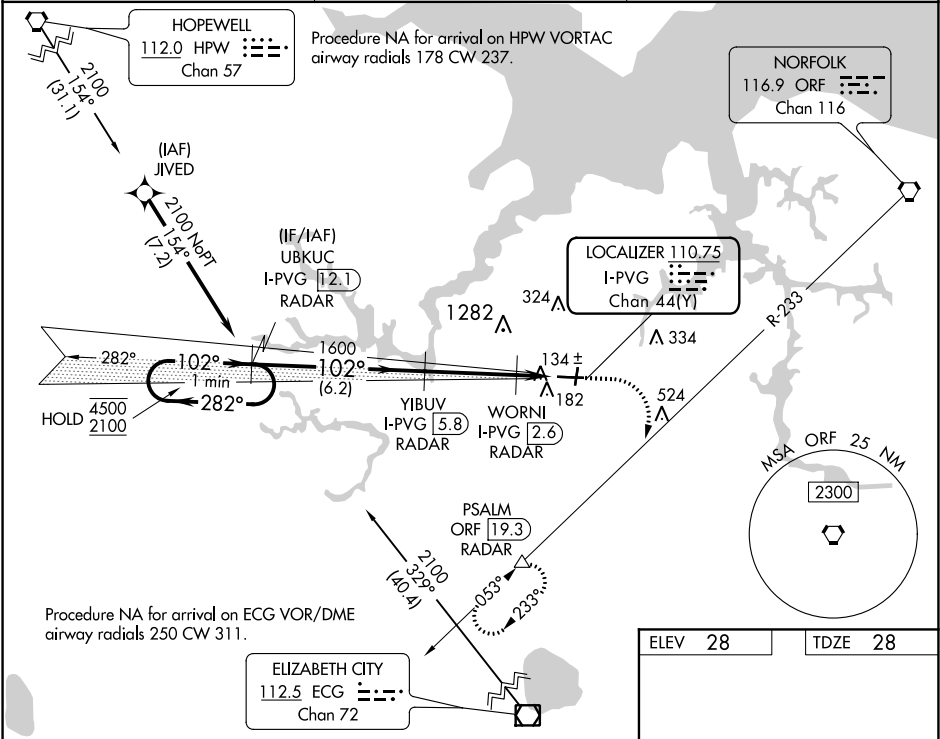
LOC/DME I-PVG	APP CRS	Rwy Idg	5350
110.75	102°	TDZE	28
Chan 44 (Y)		Apt Elev	28

ILS or LOC RWY 10

HAMPTON ROADS EXECUTIVE (PVG)

RNAV 1-GPS or RADAR required for procedure entry. DME or RADAR required.	MISSED APPROACH: Climb to 1600 then climbing right turn to 2500 on ORF VORTAC R-233 to PSALM/ORF 19.3 DME/RADAR and hold.
⚠ NA Circling NA to Rwy 2 and 20. Circling NA for Cat C north of Rwy 10-28.	
⚠ NA Autopilot coupled approach NA below 800.	

AWOS-3PT 118.375	NORFOLK APP CON 118.9 353.7	UNICOM 122.725 (CTAF) 0
---------------------	--------------------------------	----------------------------



One Minute Holding Pattern		UBKUC I-PVG (12.1) RADAR	YIBUV I-PVG (5.8) RADAR	1600	2500	ORF R-233	PSALM
4500 ← 282°		2100 → 102°	102°	1600	1600	1600	1600
GS 3.00°		TCH 45	102°	1600	1600	1600	1600
6.2 NM		3.3 NM	1.5 NM	* LOC only.			
CATEGORY	A	B	C	D			
S-ILS 10	228-¾	200 (200-¾)		NA			
S-LOC 10	400-1	372 (400-1)		NA			
CIRCLING	500-1	472 (500-1)	780-2¼ 752 (800-2¼)	NA			

HIRL Rwy 10-28 0

REIL Rwy 10 and 28 0

MIRL Rwy 2-20 0

FAF to MAP 4.8 NM

Knots	60	90	120	150	180
Min:Sec	4:48	3:12	2:24	1:55	1:36