

WAAS CH <b>77606</b> <b>W04A</b>	APP CRS <b>038°</b>	Rwy Idg TDZE <b>316</b> Apt Elev <b>316</b>
--	------------------------	---

RNAV (GPS) RWY 4

CULPEPER RGNL (CJR)

RNP APCH.

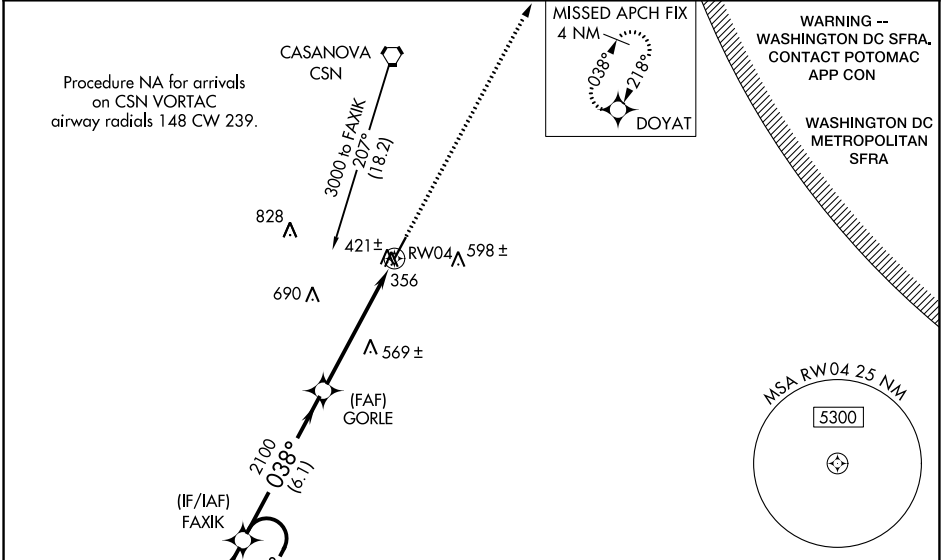
▼

⚠

When VGSI inoperative, procedure NA at night. Baro-VNAV NA when using Washington Dulles Intl altimeter setting. For uncompensated Baro-VNAV systems, LNAV/VNAV NA below -15°C or above 48°C. Rwy 4 helicopter visibility reduction below 1 SM NA. When local altimeter setting not received, use Washington Dulles Intl altimeter setting and increase all DAs 73 feet, all MDAs 80 feet, LPV and LNAV/VNAV all Cats visibility ¼ mile, LNAV Cat D visibility ¼ mile.

MISSED APPROACH: Climb to 3000 direct DOYAT and hold.

AWOS-3 <b>119.325</b>	POTOMAC APP CON <b>128.525 306.925</b>	CLNC DEL <b>121.6</b>	UNICOM <b>123.075</b> (CTAF) <b>📶</b>
--------------------------	---	--------------------------	--



ELEV 316      TDZE 316

REIL Rwy 4 and 22 **📶**

MIRL Rwy 4-22 **📶**

4 NM Holding Pattern

3000 ← 218°  
038° →

GP 3.00°  
TCH 40

FAXIK

GORLE

RW04

6.1 NM      5.4 NM

CATEGORY	A	B	C	D
LPV    DA	610-1    294 (300-1)			
LNAV/ VNAV    DA	833-1¾    517 (600-1¾)			
LNAV    MDA	820-1    504 (600-1)		820-1½    504 (600-1½)	

3000    DOYAT

↑    ✨

22

5000 1:100

038° to RW04