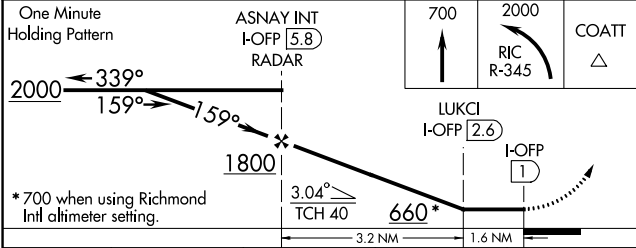
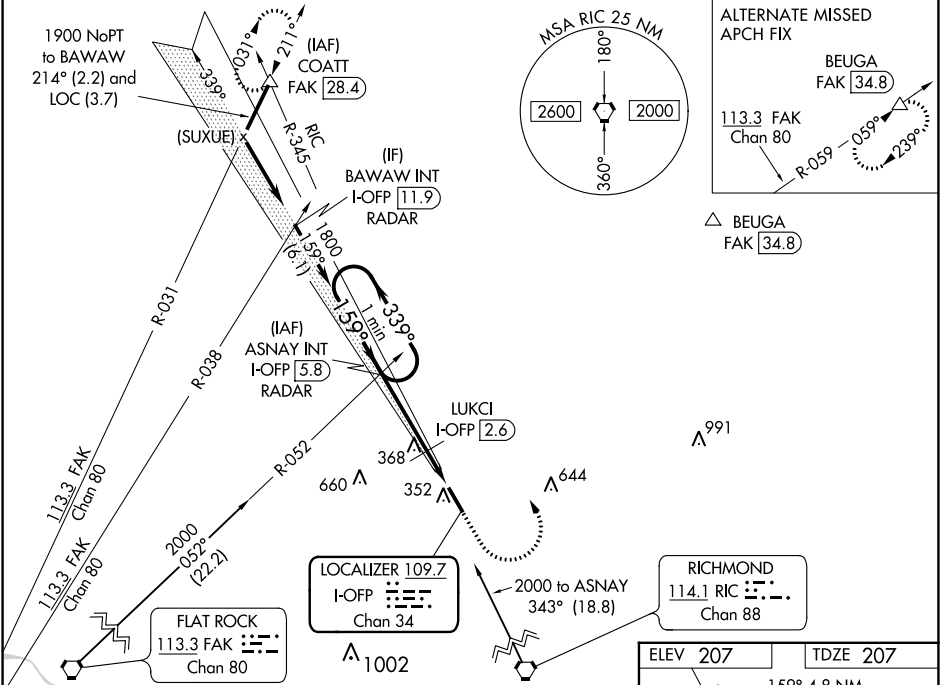


LOC/DME I-OPP <b>109.7</b> Chan <b>34</b>	APP CRS <b>159°</b>	Rwy Idg <b>5402</b> TDZE <b>207</b> Apt Elev <b>207</b>	<b>LOC RWY 16</b> HANOVER COUNTY MUNI (OFP)
---	------------------------	---	--

Helicopter visibility reduction below ¾ SM NA. When local altimeter setting not received, use Richmond Intl altimeter setting and increase all MDAs 40 feet; increase LUKCI fix minimums S-16 Cat C visibility ½ SM.

MISSED APPROACH: Climb to 700 then climbing left turn to 2000 via RIC VORTAC R-345 to COATT INT and hold.

ASOS <b>119.025</b>	POTOMAC APP CON <b>126.75 307.2</b>	CLNC DEL <b>125.4</b>	UNICOM <b>122.7 (CTAF)</b>
------------------------	--	--------------------------	-------------------------------



CATEGORY	A	B	C	D
S-16	660-1 453 (500-1)	660-1 453 (500-1)	660-1 453 (500-1)	660-1 453 (500-1)
CIRCLING	660-1 453 (500-1)	660-1 453 (500-1)	660-1 453 (500-1)	660-1 453 (500-1)
LUKCI FIX MINIMUMS				
S-16	660-1 453 (500-1)	660-1 453 (500-1)	660-1 453 (500-1)	660-1 453 (500-1)
CIRCLING	660-1 453 (500-1)	660-1 453 (500-1)	660-1 453 (500-1)	660-1 453 (500-1)

