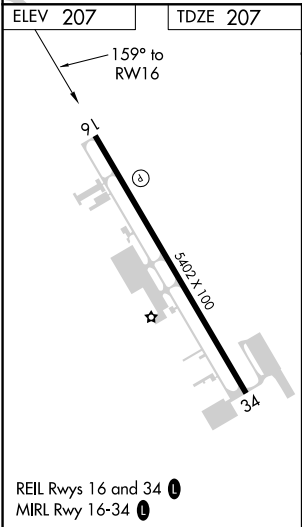
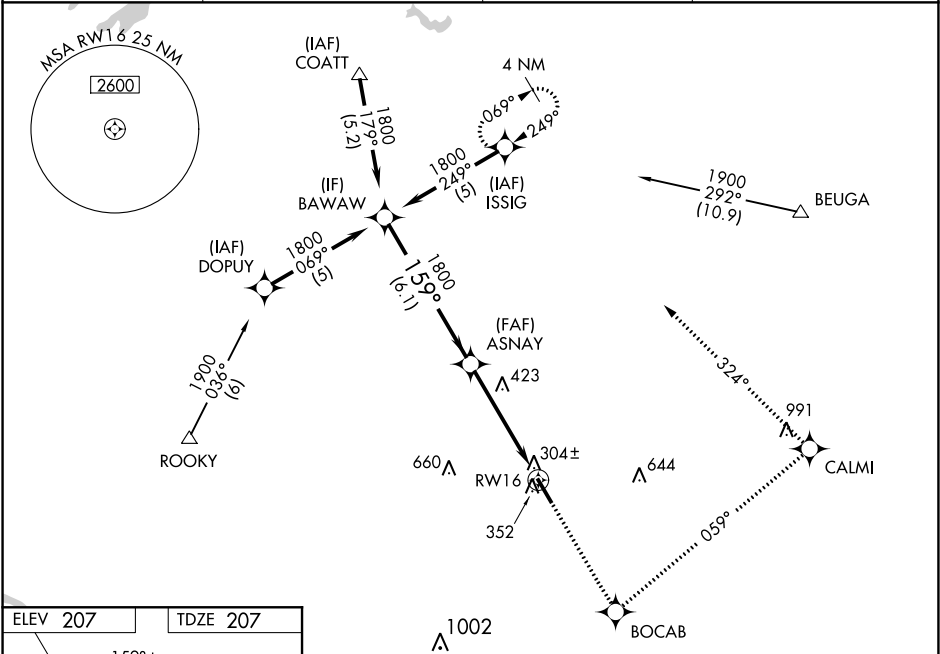


WAAS CH 42904 W16A	APP CRS 159°	Rwy Idg TDZE 207 Apt Elev 207	RNAV (GPS) RWY 16 HANOVER COUNTY MUNI (OFP)
--	------------------------	---	---

RNP APCH.	<div><div>⚠</div><div>When local altimeter setting not received, use Richmond Intl altimeter setting and increase all DA 37 feet and all MDA 40 feet; increase LNAV/VNAV all Cats and LNAV Cats C/D visibility ¼ mile. Baro-VNAV NA when using Richmond Intl altimeter setting. For uncompensated Baro-VNAV systems LNAV/VNAV NA below -15°C or above 54°C. Rwy 16 helicopter visibility reduction below ¾ SM NA.</div></div>	<div><div>MISSED APPROACH:</div><div>Climb to 2000 direct BOCAV and left turn via 059° track to CALMI and left turn via 324° track to ISSIG and hold.</div></div>
-----------	---	---

ASOS 119.025	POTOMAC APP CON 126.75 307.2	CLNC DEL 125.4	UNICOM 122.7 (CTAF) 0
------------------------	--	--------------------------	---------------------------------



BAWAW	2000	BOCAV	CALMI	ISSIG
Procedure Turn NA	↑	✧	✧	✧
		tr 059°	tr 324°	
1800	159°	ASNAV		
GP 3.00°	1800	VGSI and RNAV glidepath not coincident.		
TCH 40				
	6.1 NM	4.8 NM		
CATEGORY	A	B	C	D
LPV DA		535-1¼	328 (400-1¼)	
LNAV/VNAV DA		564-1¼	357 (400-1¼)	
LNAV MDA	700-1	493 (500-1)	700-1¼ 493 (500-1¼)	700-1½ 493 (500-1½)
CIRCLING	700-1	493 (500-1)	900-2 693 (700-2)	1020-2¾ 813 (900-2¾)