

VORTAC RIC	APP CRS	Rwy Idg	5402
114.1	165°	TDZE	207
Chan 88		Apt Elev	207

VOR RWY 16

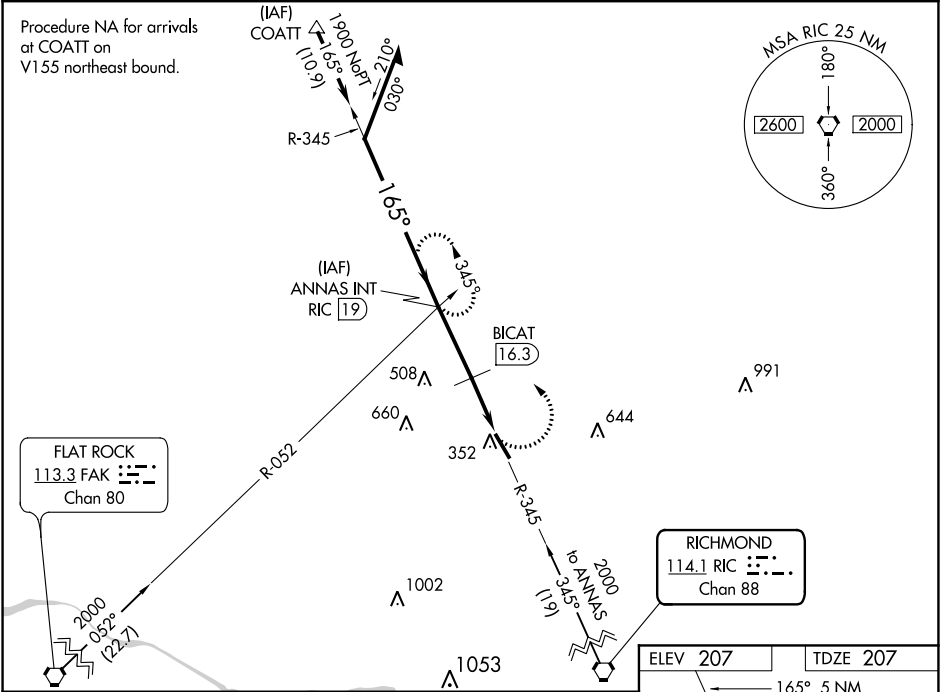
HANOVER COUNTY MUNI (OFP)

⚠

When local altimeter setting not received, use Richmond Intl altimeter setting and increase all MDA 40 feet. Rwy 16 helicopter visibility reduction below ¾ SM NA.

MISSED APPROACH: Climbing left turn to 2000 via RIC R-345 to ANNAS INT/19 DME and hold.

ASOS 119.025	POTOMAC APP CON 126.75 307.2	CLNC DEL 125.4	UNICOM 122.7 (CTAF) 0
-----------------	---------------------------------	-------------------	--------------------------



Remain within 10 NM

VGSI and descent angles not coincident (VGSI Angle 3.00/TCH 40).

ANNAS INT RIC 19

2000

345°

165°

1900

1000

2.7 NM

2.3 NM

BICAT 16.3

RIC 14

ANNAS INT

2000

RIC R-345

CATEGORY	A	B	C	D
S-16	1000-1 793 (800-1)	1000-1¼ 793 (800-1¼)	1000-2¼ 793 (800-2¼)	1000-2½ 793 (800-2½)
CIRCLING	1000-1 793 (800-1)	1000-1¼ 793 (800-1¼)	1000-2¼ 793 (800-2¼)	1020-2¾ 813 (900-2¾)

BICAT FIX MINIMUMS (DME REQUIRED)

S-16	820-1	613 (700-1)	820-1¾	613 (700-1¾)
CIRCLING	820-1	613 (700-1)	900-2 693 (700-2)	1020-2¾ 813 (900-2¾)

REIL Rwys 16 and 34 0

MIRL Rwy 16-34 0

FAF to MAP 5 NM

Knots	60	90	120	150	180
Min:Sec	5:00	3:20	2:30	2:00	1:40