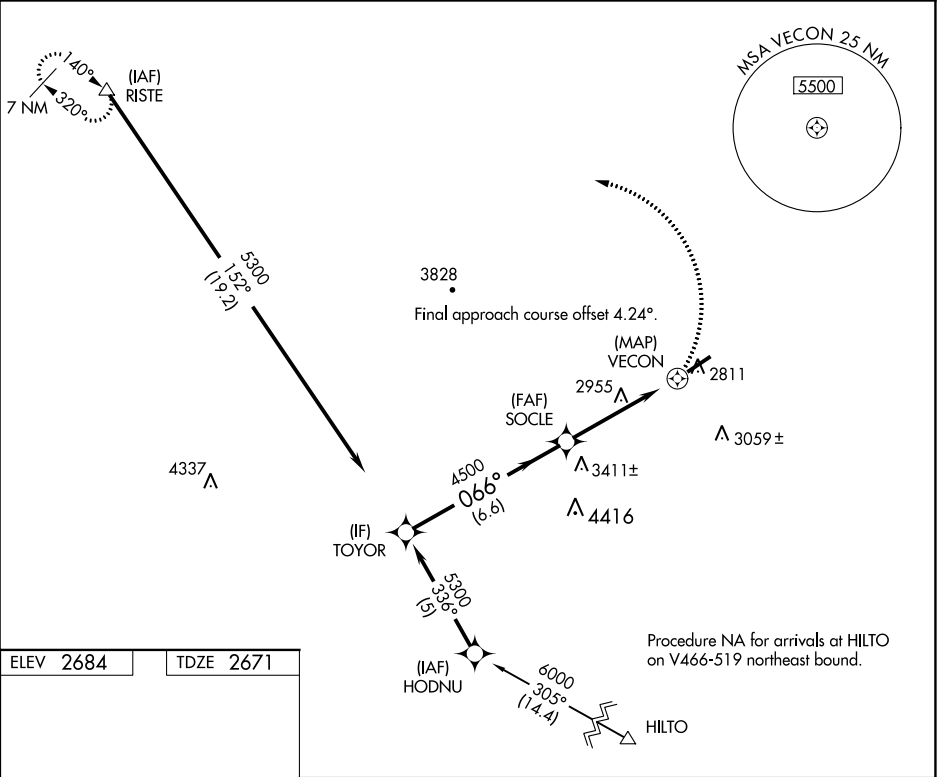


APP CRS	Rwy Idg	5280
066°	TDZE	2671
	Apt Elev	2684

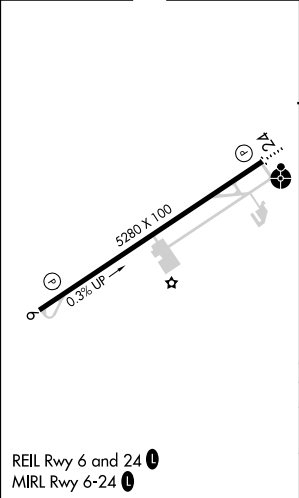
RNAV (GPS) RWY 6
LONESOME PINE (LNP)

RNP APCH.	MISSED APPROACH: Climbing left turn to 6400 direct RISTE and hold.
▼ Procedure NA at night. ▲ Rwy 6 helicopter visibility reduction below 1 SM NA.	

AWOS-3 118.6	INDIANAPOLIS CENTER 126.575 253.5	UNICOM 123.0 (CTAF) 0
-----------------	--------------------------------------	--------------------------



ELEV 2684	TDZE 2671
-----------	-----------



VGSi and descent angles not coincident (VGSi Angle 3.00/TCH 34).				6400	RISTE
TOYOR					
5300					
066°					
SOCLE					
4500					
3.34° TCH 34					
VECON					
6.6 NM				4.6 NM	0.5 NM
CATEGORY	A	B	C	D	
LNAV MDA	3260-1	589 (600-1)	3260-1¾	589 (600-1¾)	
CIRCLING	3260-1	576 (600-1)	3260-1¾ 576 (600-1¾)	3360-2¼ 676 (700-2¼)	

NE-3, 31 DEC 2020 to 28 JAN 2021

NE-3, 31 DEC 2020 to 28 JAN 2021