
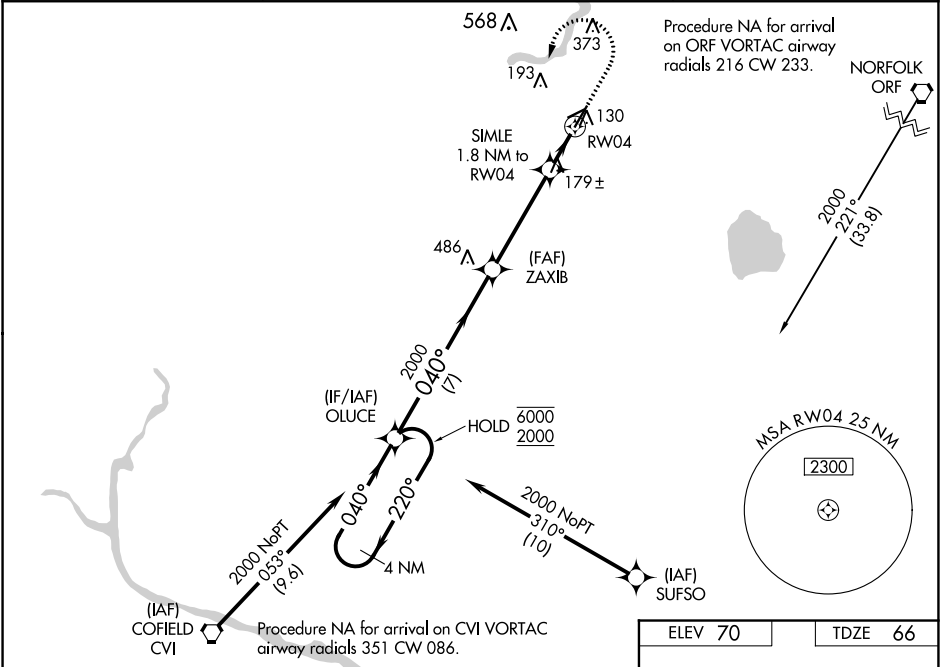


WAAS CH 65824 W04A	APP CRS 040°	Rwy Idg TDZE 66 Apt Elev 70	5007
--	------------------------	---	-------------

RNAV (GPS) RWY 4
SUFFOLK EXECUTIVE (SFQ)

RNP APCH.  For uncompensated Baro-VNAV systems, LNAV/VNAV NA below -15°C or above 54°C.		MISSED APPROACH: Climb to 600 then climbing left turn to 2000 direct OLUCE and hold.
AWOS-3 119.375	NORFOLK APP CON 127.9 269.425	UNICOM 122.7 (CTAF) 0



VGSI and RNAV glidepath not coincident (VGSI Angle 3.00/TCH 39).				
4 NM Holding Pattern				
OLUCE				
ZAXIB				
SIMLE 1.8 NM to RW04				
*1.1 NM to RW04				
*680				
7 NM				
4.1 NM				
0.7				
1.1				
CATEGORY	A	B	C	D
LPV DA		322-7/8	256 (300-7/8)	
LNAV/VNAV DA		474-1 3/8	408 (500-1 3/8)	
LNAV MDA		440-1	374 (400-1)	
CIRCLING	500-1 430 (500-1)	560-1 490 (500-1)	680-1 3/4 610 (700-1 3/4)	680-2 610 (700-2)

