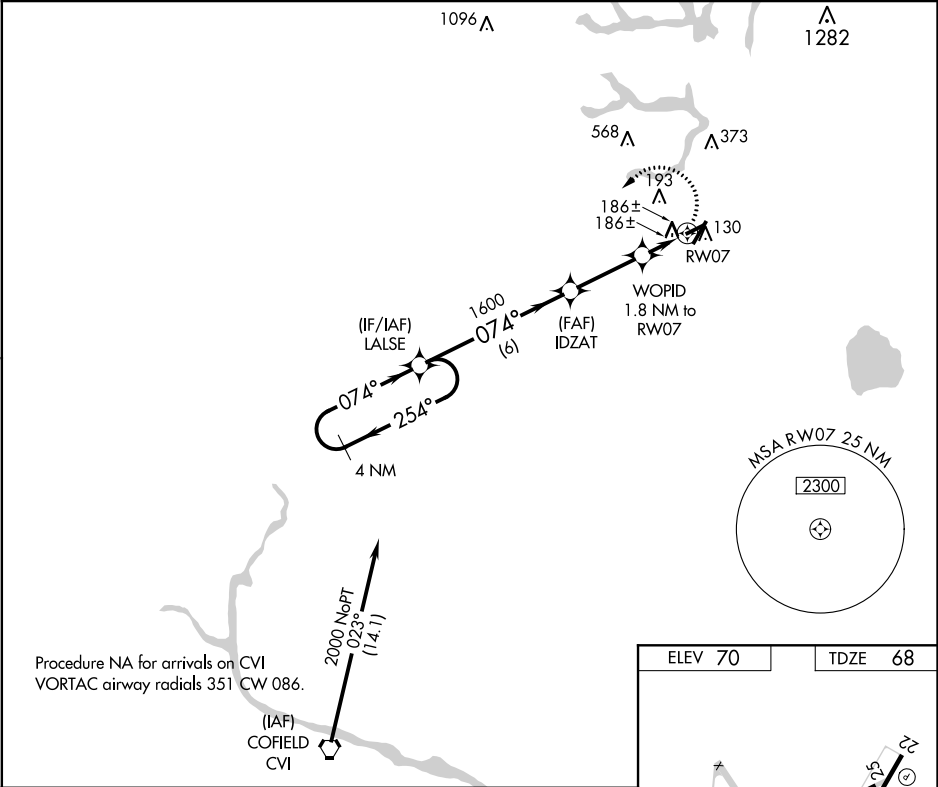


WAAS CH 78424 W07A	APP CRS 074°	Rwy Idg 3750 TDZE 68 Apt Elev 70
--	------------------------	---

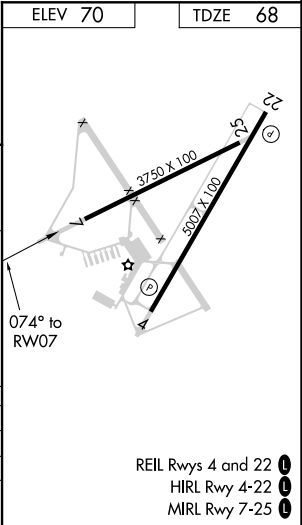
RNAV (GPS) RWY 7
SUFFOLK EXECUTIVE (SFQ)

<p>⚠ DME/DME RNP-0.3 NA. Helicopter visibility reduction below ¾ SM NA. When local altimeter setting not received, use Norfolk Intl altimeter setting and increase all MDA 60 feet.</p>	<p>MISSED APPROACH: Climbing left turn to 2000 direct LALSE and hold.</p>
--	--

<p>AWOS-3 119.375</p>	<p>NORFOLK APP CON 127.9 269.425</p>	<p>UNICOM 122.7 (CTAF) 0</p>
----------------------------------	---	--



4 NM Holding Pattern		Visual Segment - Obstacles.		2000	LALSE
				WOPID 1.8 NM to RW07	RW07
CATEGORY	A	B	C	D	
LP MDA	480-1	412 (500-1)		NA	
LNAY MDA	500-1	432 (500-1)		NA	
C CIRCLING	500-1 430 (500-1)	560-1 490 (500-1)		NA	



NE-3, 31 DEC 2020 to 28 JAN 2021

NE-3, 31 DEC 2020 to 28 JAN 2021

- REIL Rwy 4 and 22 **0**
- HIRL Rwy 4-22 **0**
- MIRL Rwy 7-25 **0**