

APP CRS	Rwy Idg	3200
255°	TDZE	464
	Apt Elev	464

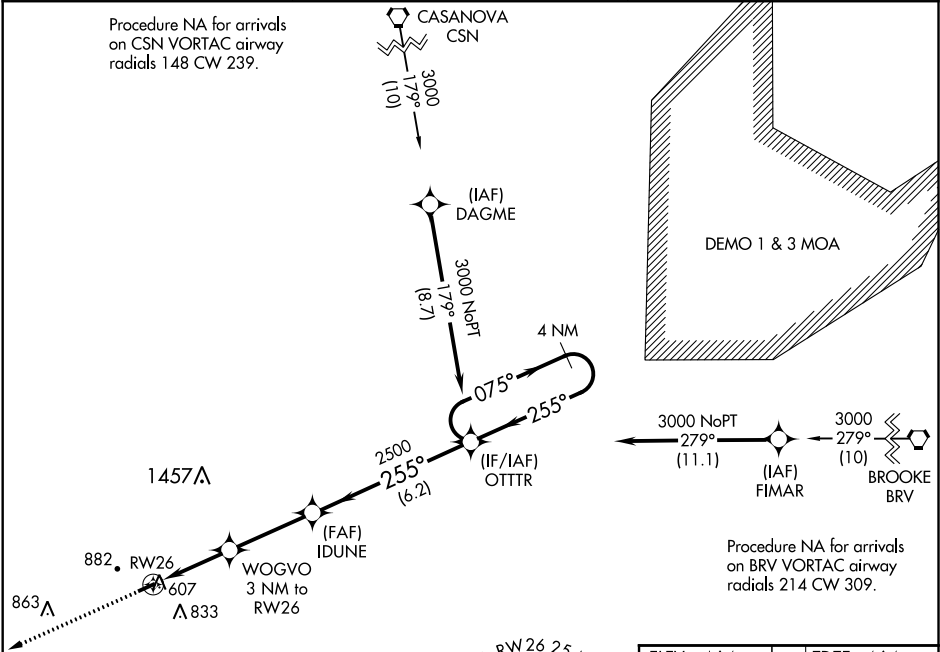
# RNAV (GPS) RWY 26

ORANGE COUNTY (OMH)

**⚠** DME/DME RNP-0.3 NA. When local altimeter setting not received, use Charlottesville altimeter setting and increase all MDA 80 feet. Rwy 26 helicopter visibility reduction below 1 SM NA. Straight-in Rwy 26 NA at night, Circling Rwy 26 NA at night.

**MISSED APPROACH:**  
Climb to 3100 direct ZAVRO and hold.

AWOS-3 <b>118.075</b>	POTOMAC APP CON <b>132.85 323.125</b>	UNICOM <b>122.8 (CTAF) 0</b>
--------------------------	--	---------------------------------



**MISSAPCH FIX**

ZAVRO

075°

255°

4 NM

**MSA RW26 25 NM**

5300

ELEV 464

TDZE 464

3100

ZAVRO

VGSI and descent angles not coincident (VGSI Angle 4.00/TCH 44).

WOGVO 3 NM to RW26

IDUNE

OTTR

4 NM Holding Pattern

075°

255°

3000

Visual Segment - Obstacles.

1460

2500

3 NM

3.3 NM

6.2 NM

RW26

3200 X 75

0.6% UP

255° to RW26

CATEGORY	A	B	C	D
LNAV MDA	980-1	516 (600-1)	NA	NA
<b>C</b> CIRCLING	1300-1¼	836 (900-1¼)	NA	NA

MIRL Rwy 8-26 0

REIL Rwy 8 and 26 0